

# WLA 12



## CONTENTS

LA CARLOTA METROPOLITAN GREEN PARK  
OPUS-DELGADO-PÉREZ

ENTRE LES RANGS | KARVA ARCHITECTURE

STRATHEWEN COMMUNITY BUSHFIRE MEMORIAL  
URBAN INITIATIVES AND ARTERIAL DESIGN

LEEWARDEN WILHELMINA SQUARE | HOSPER

FENGMING MOUNTAIN PARK  
MARTHA SCHWARTZ PARTNERS

JANE RAU INTERPRETIVE TRAIL  
OKANOGAN TRAIL CONSTRUCTION WITH JACK GILCREST  
& BRUCE BARRERA

SHENZHEN STOCK EXCHANGE | INSIDE OUTSIDE

FAR EAST ORGANIZATION CHILDREN'S GARDEN | GRANT  
ASSOCIATES

GREENLAND SHENYANG PRIMUS HOTEL | ASPECT STUDIOS

CHEMIN-QUI-MARCHE LOOKOUT | GROUPE IBI-CHBA

PALM ISLAND | HASSELL

BOSCO VERTICALE | VERTICAL FOREST | BOERI STUDIO

SPORT-PROMENADE | BO LANDSCAPE

DÖDERHULTSVIKEN | MANDAWORKS, ADEPT, HOSPER SWEDEN, WSP

ESTE VILLA | ONG&ONG

TAICHUNG GREENBELT | AECOM

COMPLETE SCHIEDAM  
BASIC CITY + FELIX LANDSCAPE ARCHITECTS

2014 OUTLOOK SURVEY | WORLD LANDSCAPE ARCHITECTURE

# LA CARLOTA METROPOLITAN GREEN PARK

OPUS-DELGADO-PÉREZ





## LA CARLOTA METROPOLITAN GREEN PARK OPUS-DELGADO-PÉREZ

The Metropolitan Municipality of Caracas announced the winner of the international design competition a team consisting of OPUS-Oficina de Proyectos Urbanos (Colombia), Manuel Delgado (Venezuela) and Jorge Pérez Jaramillo (Colombia) to transform La Carlota Airport into a “Metropolitan Green Park” in Caracas, Venezuela.

Antonio Ledezma, Metropolitan Mayor of Caracas, supported by local municipalities, professional, community and academic organizations, announced the winner of a two-round competition of ideas to transform La Carlota Airport into a park located in central Caracas. The proposal responds to an old claim from the neighbors, environmental organizations, professional and academic associations and inhabitants of a city that, despite its beautiful natural resources, counts only with one square meter of park for inhabitant, when the optimum situation should be 10 Sq. Meters/Inhabitant.

The 103 hectares occupied by the Francisco de Miranda military air base (Aeropuerto La Carlota) is located in the center of the city. The selected proposal takes advantage of the old airport to restore the natural elements that structured the valley, taking into consideration the ecosystem and biodiversity through the rivers that flow from the Avila Mountain and the original condition of the Guaire River, creating floodplains that can be used for recreational and educational activities. The proposal will be transformed into a regulation as part of the plan Caracas 2020. The construction of this park would offer the opportunity to re-connect the city physically

and socially, proposing a great space for the encounter of all the inhabitants of a city that has been divided for such a long time.

The winning idea proposes the most efficient use of space with great potential for social and urban integration through the implementation of five interrelated strategies that will result in new relationships and meanings for the city:

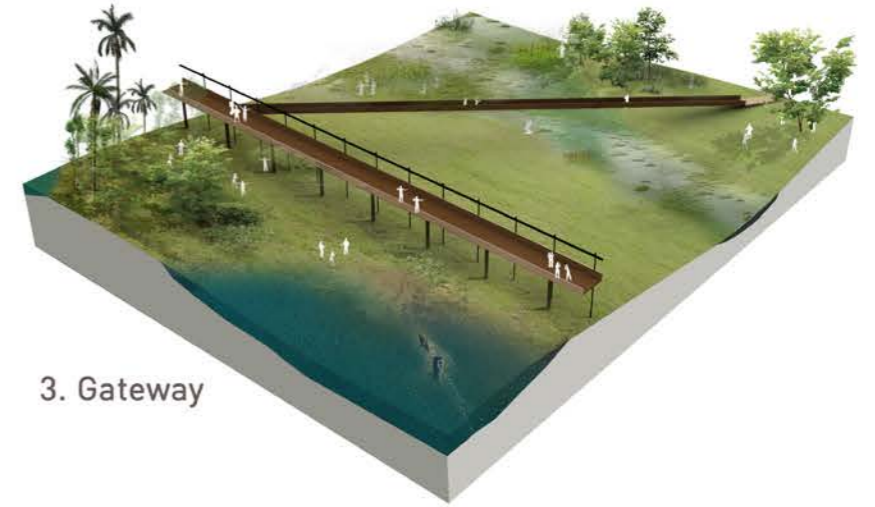
1. Environmental Balance: Recovery of the natural landscape of the Valley of Caracas, strengthening ecological connectivity between the Ávila, the main river (Rio Guaire) and the hills to the south. Contribution to the river sanitation and flood control. Re-naturalization of the river and streams, to and consolidation of a metropolitan park system and green corridors, using other potential spaces in the city.
2. Urban Dynamics: Contribution to the urban mobility in a city that has been congested by the increasing use of the private automobile. Connection of the urban fabric and transformation of the park into a transportation hub integrated to the Metro System and other public transport alternatives, like electric trolley system, bike paths and pedestrian walkways. Development of a plan with the center in La Carlota to attend emergencies at the metropolitan level and creation of a set of well served heliports to contribute efficiently in this matter.
3. Social Encounter: Creating opportunities for education and innovation, new public spaces, cultural institutions and sports facilities. Creation



1. La Floresta Edge



2. Nothr - South Street



3. Gateway



4. River Transformation



5. Land Bridge



6. Rio de Janeiro Ride

# LA CARLOTA METROPOLITAN GREEN PARK

## OPUS-DELGADO-PÉREZ

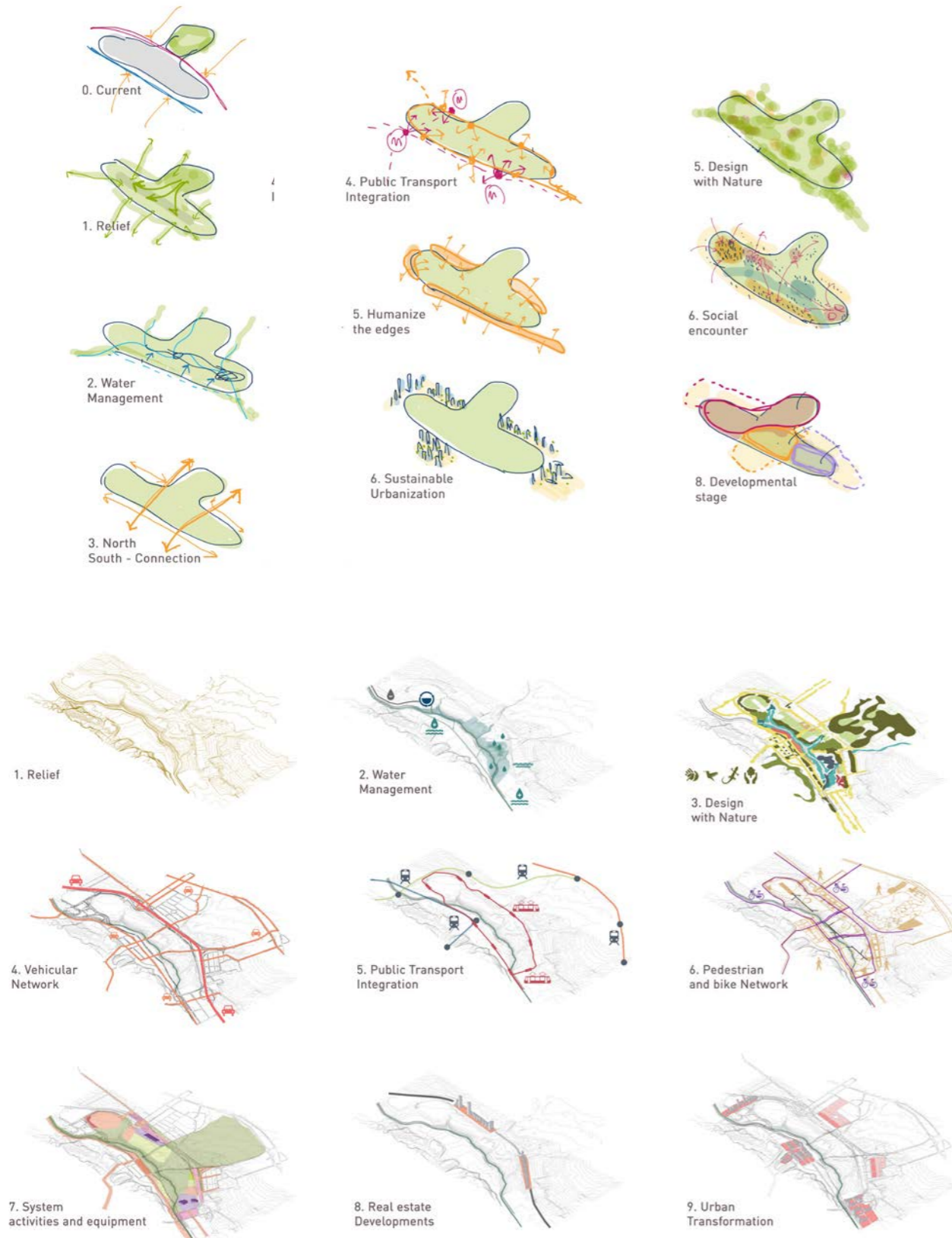
of an “Air Park”, to honor the memory of the place as an airport and allowing recreational activities open to the sky. The same space would serve as an open space for large gatherings, concerts, fire works and demonstrations made especially for the encounter and reconciliation of the people of Caracas, as the Agora of the City

4. New housing developments: Compact and polycentric model of occupation with emphasis in ecological and economic sustainability to develop density and services in a new centrality at metropolitan scale, using the airspace previously occupied by the approach cone of the runway. Develop Special Plans with local municipalities and residents to increase the density in the surrounding neighborhoods and new rental developments on public land on top of the highway as connectors to bring the city closer to the park, and also generate financial resources for its construction and maintenance.

5. Management Model: A model based on the proposed 3 phases, cost estimates and funding sources to create Development Corporations between neighboring, municipalities and private developers under the model of public-private partnerships, which allow them to manage their own benefits and funds for this project.

The team of OPUS-Oficina de Proyectos Urbanos (firm from Medellín, Colombia), Manuel Delgado (Architect and Urban Planner from Venezuela, Associate Professor of Architecture at Wentworth Institute of Technology in Boston) and Jorge Pérez Jaramillo (former Head of the School of

Architecture, Universidad Pontificia-Bolivariana UPB) was part of a group of three finalists selected among 69 international participants to develop a second phase of ideas. The team counted with a group of interdisciplinary advisors conformed by Gloria Aponte García (Landscape Architecture, Colombia), Guillermo Penagos (MARES - Colombia), Juan Carlos Vargas Moreno (GeoAdaptive, Costa Rica–Boston), Gladys Emilia León (Venezuela), Cesar Espinal (Structural Engineering Colombia), Álvaro Vélez (Transportation Engineer, Colombia), Oscar Pérez (Management, Colombia) Juan Carlos Gómez (Feasibility Studies, Colombia) and Esteban Yépez (Sociology and communications, Colombia).



# LA CARLOTA METROPOLITAN GREEN PARK

## OPUS-DELGADO-PÉREZ

LA CARLOTA METROPOLITAN GREEN PARK  
OPUS-DELGADO-PÉREZ  
Caracas, Venezuela

### DIRECTORS |

Arch. Manuel José Jaén Posada, Colombia  
| Arch. Carlos Andrés Betancur Cifuentes,  
Colombia | Arch and Ms Landscape Arch. Carlos  
David Montoya Valencia, Colombia | Arch.  
Manuel Delgado Arteaga, Venezuela | Arch.  
Jorge Pérez Jaramillo, Colombia

### TEAM |

Ivan Leonardo Forgioni Flórez, Colombia  
(coordinator), Juliana Montoya Arango,  
Colombia | Daniel Alejandro Miranda Muñoz,  
Colombia | Andrea Maruri Bedoya, Colombia  
| Juan Sebastián Restrepo Aguirre, Colombia  
| Carlos Alberto Cano, Colombia | Santiago  
López Posada, Colombia | Sara Marcela  
Arredondo Peña, Colombia | Lucas Serna  
Rodas, Colombia | Mario Camargo Gómez,  
Colombia | Laura Gutierrez Zimmermann,  
Argentina | Lina Marcela Flórez Díaz, Colombia  
| Luisa Fernanda Amaya Vergara, Colombia  
| Isabel Villegas Molina, Colombia | Melissa  
Ortega Upegui, Colombia | Juan Camilo Zapata  
Villegas, Colombia | Andrés Santiago Fajardo  
Mejía, Colombia | Esteban Yezpe, Colombia

### ADVISOR |

Gladys Emilia Leon, Venezuela | Ms Landscape  
Arch. Gloria Aponte García, Colombia | Phd.  
Landscape Arch. Juan Carlos Vargas Moreno,  
GeoAdaptive, Costa Rica, Boston | Ms. Bio.  
Guillermo Penagos, MARES, Colombia | Ing.  
Cesar Espinal, Colombia | Ing. Alvaro Vélez,  
Colombia | Ing. Oscar Pérez, Colombia | Ing.  
Juan Carlos Gómez, Colombia.

Image & Text Credits | Opus-Delgado-Pérez  
CONTRIBUTORS LOW RESOLUTION | WLA 12



# ENTRE LES RANGS

KANVA ARCHITECTURE

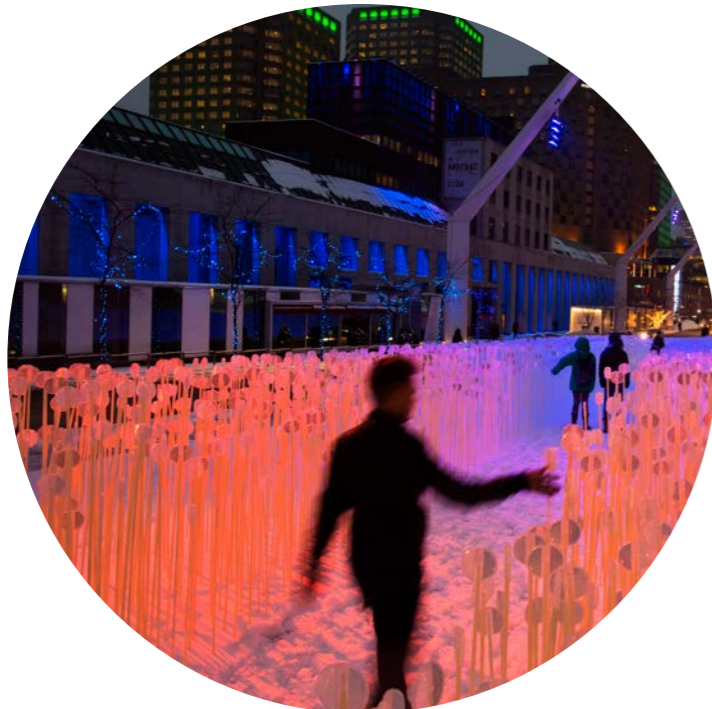


## ENTRE LES RANGS | KANVA ARCHITECTURE



The year's shortest days are almost here, and that means, happily, the return of Luminothérapie to Quartier des Spectacles. On December 10, the Quartier des Spectacles Partnership unveiled the two participatory works comprising the fourth annual edition of the event that celebrates Quebec's northern climate. Every day until February 2, starting at nightfall, the luminous installation Entre les rangs will turn Place des Festivals into a wonderland.

When we see this work, evocative of a rural wheat field swaying in the breeze, we get a little taste of the distant summer even as winter dawns. Fluttering atop 28,500 flexible stems that bend in the winter wind, white reflectors scatter light from the projectors in Place des Festivals. Right in the heart of the city, these stylised stalks of wheat dance and shimmer to a musical score by Patrick Watson, inviting passers-by to enjoy a dreamy stroll among them.



Inspired by the shape and layout of the rangs, the system of land division used in New France, the designers of the Kanva architecture firm, working in collaboration with Udo Design, Côté Jardin, Patrick Watson, Boris Dempsey and Pierre Fournier, created a large-scale metaphor that beautifully evokes the shimmering of vast fields of wheat in the wintery city.

ENTRE LES RANGS  
MONTREAL, CANADA

Design Firm | Kanva Architecture  
Image Credits | Title Page - Cindy Boyce  
This Page Martin Doyle (Top Left & Bottom Row)  
Cindy Boyce (Top Right)



# STRATHEWEN COMMUNITY BUSHFIRE MEMORIAL

URBAN INITIATIVES WITH ARTERIAL DESIGN



2

## STRATHEWEN COMMUNITY BUSHFIRE MEMORIAL URBAN INITIATIVES WITH ARTERIAL DESIGN

Located on the northern fringe of Melbourne in Victoria, Australia, Strathewen is a small town of around 250 people. This peaceful semi rural community was devastated by the Black Saturday Bushfires of February 7 2009.

The combination of the natural amphitheatre created by the surrounding heavily vegetated ranges, the time of day the fire struck, poor road access and the intensity of the wind and heat contributed to the deaths of 29 people within Strathewen. Per capita this represented the greatest loss of life of any town hit by the bushfire.

Located on Chads Creek Road in Strathewen, the Memorial occupies around 300m<sup>2</sup> of creek side reserve. The design team were chosen through an expression of interest and subsequent short listed design competition process.

The Memorial was built for a modest budget of approximately \$350,000 and funded by publicly donated funds, which were given in response to the Black Saturday Bushfires. The memorial includes around 10,000 words of text and stories arranged in a Haiku style and embedded within the sandstone paving around the space. The raw content for this key element came out of an intensive and highly emotional community engagement process. Every word was carefully arranged into themes and laid out onto the site plan to reinforce the sense of journey and experience.

This project represents an excellent model of inclusive community engagement and exemplifies how meaningful community input can result in outcomes that far exceed the initial design brief

and expectations. The commitment of the design team to achieve a high quality and appropriate design solution for the community and site far exceeded their paid engagement. It is a project of which all involved parties are equally proud and has been acknowledged as one of the most successful community driven bushfire recovery projects.

The design of the Strathewen Community Bushfire memorial was a collaboration between Urban Initiatives and Arterial Design. The intent of the memorial was to capture the many and varied effects of the 2009 Black Saturday Bushfires on Strathewen residents, as well as the surrounding environment. It was to be a place that acknowledged individuals who lost their lives in the fire, as well as telling the story of camaraderie and strength in rebuilding the community after the fires. The challenge was to take visitors on a journey of before, during and after the fire without them re-living the horror of the event. It was to capture the gravity of the day and the ripple effects on the community but to be sombre and respectful in its treatment.

The memorial sits in a peaceful and tucked away section of creekland near, the recreation reserve which was the central gathering point for the community immediately after the fires. It was designed to fit within the bushland setting with seating for quiet contemplation and reflection. The local provenance planting and materials for the memorial were selected to ensure the memorial has a resonance and timeless quality, which sit firmly within the space and ground on which it is set. The memorial was designed to tell the story to future generations. Constructed from sandstone and slate with concrete and timber



3



## STRATHEWEN COMMUNITY BUSHFIRE MEMORIAL

### URBAN INITIATIVES WITH ARTERIAL DESIGN

seating, the materials were chosen to weather well over time and endure a lifespan of up to 100 years.

The design brief was the result of extensive community engagement and from the start of our involvement and collaboration, the community felt a strong ownership of the project. They were open to the process of telling their stories and we made the commitment to them that every voice would be represented. Arterial worked with the concept of Haiku poetry to weave the varying intensities of people's words into a journey of diverse experiences: heat, wind and fire, loss, grief, rebuilding, joy and friendship. The Haiku verses were sandblasted at varying depths into sandstone that become more legible via the shadows that they cast. The juxtaposition of content allows the reader to grab moments of highs and lows without becoming overwhelmed with the enormity of the event.

The community expressed a wish for a water element as a symbol of cleansing the soul and nourishing new growth. This inspired the simple concept of water drops in the landscape. Water drops of course create ripples of concentric circles. Circles have no beginning and no end. They represent the cycle of life and of healing. As we got to know the community and they told us their stories, we began to reference the water drops as teardrops and so developed the simple concept of four tear drops in the landscape radiating ripples out into the surrounding environment. These were carefully sited with a natural cleared area close to, but sufficiently separate from the recreation reserve.

Across 400 pieces of circular sandstone cut to varying radii, there are a total of 10,000 words

set within the ground plane. These are arranged within the four circles thereby telling the collective community stories of Strathewen. The memorial is a seamless integration of story and context.

The approach path to the memorial contains a ring that references stories of Strathewen before the fire, while moving over the bridge and stream the main central circle tells the story and tragedy of the event. The intensity is focused on the central droplet which is surrounded by a circular bench seat. Embedded within the paving are the names and ages of the 29 community members who perished. Text bands carry stories of broader losses on the outer edge of the central ring and more personal acknowledgements closer to the centre. The visitor journey intensifies toward the centre of the main circle. Brief poems and short memories begin to acknowledge the names of loved ones. In the centre of the main circle lies 29 stainless steel plaques, (surrounding a reflective stainless steel dome), each carrying the name and age of a community member who died in the fires. There is a circular seat defining the inner circle thereby embracing the sacred nature of this central space. The third ring contains messages of thanks for the support that the community received during and after the fire, while the final ring focuses on the future and stories of renewal and recovery. The combination is a very moving and powerful interplay of landscape, story and experience.





## STRATHEWEN COMMUNITY BUSHFIRE MEMORIAL URBAN INITIATIVES WITH ARTERIAL DESIGN

*"My daughter and grandson perished in the fire. They have head stones at the Fawkner Cemetery but we hate going there. It is very depressing and we feel no connection to them when we are there. You have given us a place to come, to sit and to be with our daughter and her son. I feel close to them when I am here and it is such a beautiful place to be and to remember them. Thank you."*

Mother of Sue Evans who perished in the fire

*Hi Jan, I am still over in Amsterdam. Malcolm has just sent me images of the completed memorial and I am moved to tears. From this distance I find myself looking back on the Strathewen story – can something be so shocking and so beautiful, can something be so sad and so full of hope. I think the memorial contains all these juxtaposed feelings that have arisen as part of our story. Thank you Jan, Tim and your team for giving us more than we could ever have imagined...*

Barbara | Strathewen Community member

*This project had enormous potential for community disharmony, yet from design to completion we did not receive one negative comment. It was a peaceful experience thanks to the sensitivity of all those involved. The Memorial designers displayed a level of respect, empathy and collaboration with the community, our Memorials Sub Committee and Project Governance Group which in my experience is very rare.*

Malcolm Hackett | Chairman of the Strathewen Community Renewal Association

*Hi Jan, I have just come back from visiting the memorial site. Words cannot explain what a beautiful memorial you and Tim have given us...*

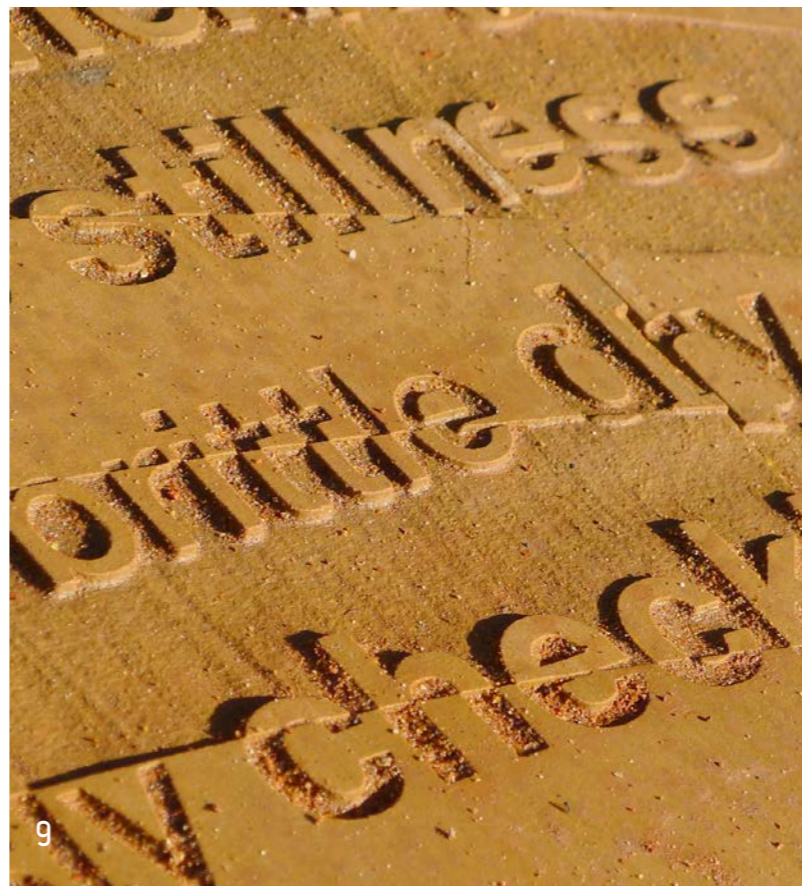
Steve Pascoe | Community Member and former Chairman of the Strathewen Community Renewal Association.



7



8



9

STRATHEWEN COMMUNITY BUSHFIRE  
MEMORIAL  
STRATHEWAN, VICTORIA, AUSTRALIA

Design Team | Urban Initiatives Pty Ltd, in  
association with Arterial Design Pty Ltd

Client | Strathewen Community Renewal  
Association

Project Management | Shire of Nillumbik  
Contractor | Arena Landscapes Pty Ltd  
Awards | 2013 AILA Victoria State President's  
Award

Image Credits

1-5, 7-9 | Drew Echberg

6 | Jason Isaks



# LEEWARDEN WILHELMINA SQUARE

HOSPER

## LEEWARDEN WILHELMINA SQUARE | HOSPER



### Above- and underground transformation

The Wilhelmina Square is located in the center of Leeuwarden. HOSPER has been asked to create a layout for the public space of the square and its surroundings. The current square houses the new building for the Fries Museum. In addition, in line with the project 'Nieuw Zaailand', a façade of new buildings with shops and apartments is added. Through these interventions, the square has become a more intimate space. The Wilhelminaplein became part of the pedestrian zone. All this provides many opportunities for enhancing the quality of the area and making the square a pleasant place to reside.

In addition to the above-ground transformation, the plan also entails an underground transformation. The parking garage under the square needed to be enlarged and expanded to 700 parking spaces. A major challenge was the integration of trees, on the roof of the garage. Another challenge was to create an intimate square while still offering space and flexibility for various uses such as the market, the carnival, events, terraces and supply traffic.

### Open planning process

In view of the public nature of the place an open planning process was essential to the project. Using 3 models in an online survey, the plan elements were examined to find out which could count on the most enthusiasm of the people and users. Based on this public consultation and the official advice, the Council opted for the model Carpet.

### A chic carpet

In the design the center of the square is paved with a chic carpet made of three types of natural stone clinkers paved in a varied pattern. The carpet is a separate element and mediates between the differences in scale and construction period of the surrounding buildings. It contains LED-lights, drainage lines and small fountains that contribute to the vibrancy of the square during the day and at night. Multi-stemmed trees are sprinkled over the square. The trees are protected by large 'tree benches' of 2 x 5 meters, which also serve as seats.

LEEWARDEN WILHELMINA SQUARE  
LEEWARDEN, THE NETHERLANDS

Designers |  
Mark van der Heide  
Hanneke Kijne  
MARIKE OUDIJK  
Petrouschka Thumann  
Han Konings

Partners |  
SmitsRinsma  
Het LUXlab  
Rots Maatwerk  
IPV Delft  
Falco BV  
Bert Bandringa (gem. Leeuwarden)

Client | Municipality of Leeuwarden

Image Credit | Pieter Kers  
Text Credit | HOSPER

LEEWARDEN WILHELMINA SQUARE | HOSPER



LEEWARDEN WILHELMINA SQUARE | HOSPER



# FENGMING MOUNTAIN PARK

MARTHA SCHWARTZ PARTNERS



# FENGMING MOUNTAIN PARK | MARTHA SCHWARTZ PARTNERS

Fengming Mountain Park is set on a 16,000sqm site, located in the growing Shapingba District of Chongqing, China. The site extends south to the old housing quarter, north to the Huayu City Project, west to Shangqiao Road and east to Fengxi Road, which is the main entrance and highest point of the site. Opened in Spring 2013, visitors are taken on a dynamic journey via a series of iconic mountain-shaped follies, plazas, greenery and water features to the proposed Vanke Golden City Development sales centre.

The design objective was to create a demonstration park and to express a unique identity to draw attention to the development sales centre from the upper main road and entrance from Fengxi Road; and be adaptable for integration into the future urban public realm.

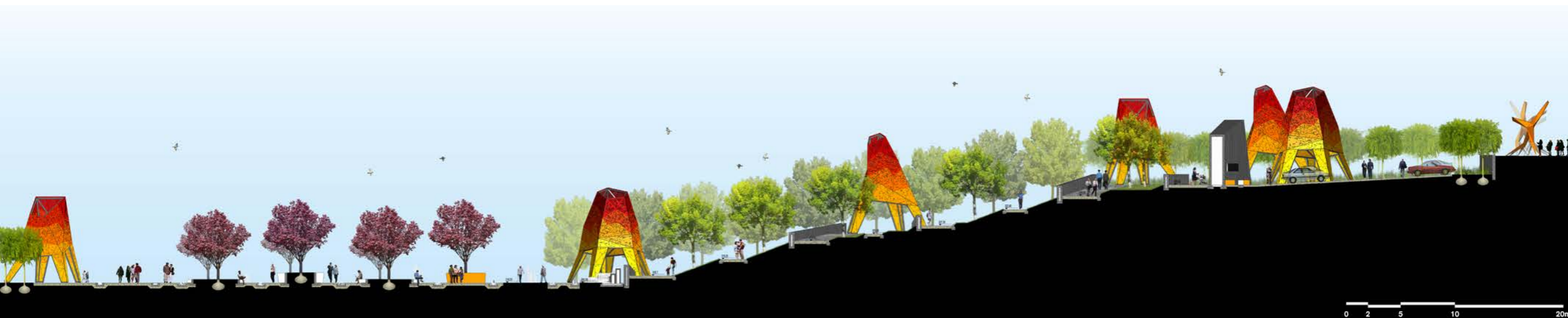
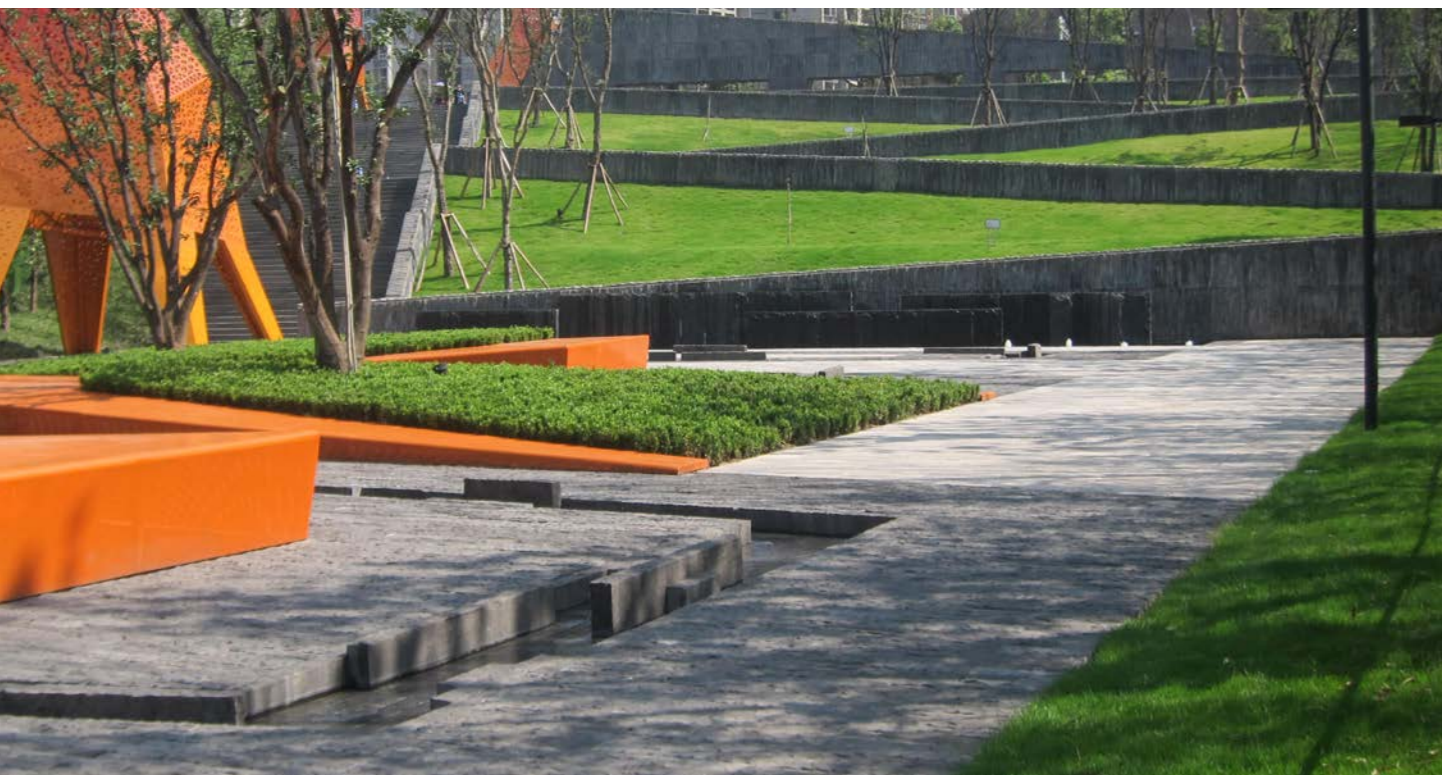
Extreme topography creates both a functional challenge to facilitate pedestrian and vehicle movement from the upper carpark to the sales centre at the lowest point; and a unique opportunity to provide a dynamic landscape – the ‘mountain’.

The vision was to create a strong connection between the setting of the site and the surrounding backdrop of the mountainous peaks, valleys of the Sichuan Basin; the agrarian patterning of rice paddy terraces; the Chang Jiang river; and the mysterious white/grey misty sky of Chongqing. These elements provide the inspiration for the ‘mountain’ pavilions, zigzag patterns, orchestrated terrain and the use of vivid colours (to contrast against the sky).

On arrival from Fengxi Road, dancing red and orange sculptures line the entrance to draw people into the arrival plaza carpark. The first of the mountain pavilions stands at the entrance, to mark the start of a series of visual mountain peaks, descending down the slope. Each pavilion is strategically positioned along the zigzag path, leading pedestrians down the ‘mountain’, towards the sales centre area. The pavilions provide shade during the day and at night, are lit to create a spectacular glowing lattern effect.

The zigzag path ensures the extreme level change is accessible for all, the path also becomes a geological pattern language, as if one is walking on trails winding up a steep mountain. At each turn, a platform provides a place to sit and enjoy the view or take respite from the hill. The zigzag path is lined with balustrade walls constructed from large pieces of deeply textured dark concrete to create a rocky silhouette looking up the hill. The valleys or crevices that are created by the walls become sources for streams which run through the project.





FENGMING MOUNTAIN PARK | MARTHA SCHWARTZ PARTNERS



## FENGMING MOUNTAIN PARK | MARTHA SCHWARTZ PARTNERS



The presence of water is an important part of Fengming Mountain Park and is expressed as a 'flow' of water from the arrival plaza to the sales centre, using a variety of different water effects, such as: channels, pools and jets to assist with cooling, provide sounds and atmosphere to what is a captivating landscape.

This entire park is a sequence, a triumphant journey, from the patterned markings in the arrival plaza; down the zig zag path; into meandering water features; through the plazas and then on to the final destination at the sales centre. Fengming Mountain Park has become a vibrant, joyful and well loved part of the Chongqing cityscape.

FENGMING MOUNTAIN PARK  
CHONGQING, CHINA

Design Firm | Martha Schwartz Partners  
Design Team | Martha Schwartz, Nigel Koch, Jasmine Ong, Christabel Lee, Aigars Lauzis, Ignacio Lopez-Buson, Ceylan Belek-Ombregt, Gilles de Wever and Markus Jatsch  
Architects | Lacime  
Contractor | Third Chongqing Construction Engineering Co.Ltd.  
Client | Vanke  
Images | Martha Schwartz Partners

# JANE RAU INTERPRETIVE TRAIL

OKANOGAN TRAIL CONSTRUCTION WITH JACK GILCREST &  
BRUCE BARRERA





## JANE RAU INTERPRETIVE TRAIL | OKANOGAN TRAIL CONSTRUCTION WITH JACK GILCREST & BRUCE BARRERA

The Jane Rau Interpretive Trail is an ADA accessible hiking trail at Brown's Ranch Trailhead in northern Scottsdale, Arizona. This dynamic trail highlights the McDowell Sonoran Preserve's vast, flourishing and essential ecosystem, and is accessible to people of all ages and physical abilities. It provides an engaging natural setting to the community and disproves the stereotype of deserts as useless, vacant tracts of land. The new trail opened in December 2013 and soon, it will incorporate interpretive signs to help identify the native habitat, geography and wildlife along the path.

The Jane Rau Trail is designed to follow in the footsteps of Jane Rau, a local Scottsdale resident and activist who has dedicated her life to protecting and educating the public about the uniqueness and beauty that characterizes the Sonoran Desert. The trail leads east from the Brown's Ranch Trailhead, passing through a unique area of the preserve. This area is occupied by smooth stacked boulders, joshua trees, yuccas, towering saguaros and panoramic views of the surrounding mountains. It is also home to many animals, including mule deer, javelinas, bobcats, snakes, coyotes, hawks, cottontail and jackrabbits.

The half-mile, six foot-wide trail has a five percent overall grade on the entire path. The gradual running slope and shortness of the trail makes it an easy, accessible hike without losing the benefits of nature. Stone mason benches are placed at viewpoints along the pathway for resting and observing the scenery. The trail is

composed of native soil and blends with its surroundings, allowing its users to absorb the desert environment around them. The earth-toned trail acts as a frame for the panoramic views that navigate the preserve.

This trail is not only designed to display the beauty and abundance of the desert; it is also designed to be sustainable through the harsh weather conditions that occur there. In addition to the carefully placed tread and riprap channeling, the trail includes a six foot-wide steel grated bridge over a small canyon wash. The bridge is wide enough for wheelchairs or strollers to pass side-by-side and the grate design creates a smooth surface for narrow wheels to cross without getting stuck in the gaps. The trail also encompasses two steel grated spillways for channeling the water that rushes through the canyon wash. The purpose of these grated channeling systems is to allow water to pass through them during heavy flooding without damaging the trail. These gratings match the Brown's Ranch Trailhead's steel design and are rust hued, blending into the desert environment.

The Jane Rau Trail is an invaluable path that gives people who don't always have the opportunity to go for a hike the ability to enjoy nature and to experience the desert. The sustainable trail is built to resist deterioration and will last through generations. Perhaps it will encourage the community, as Jane Rau has, to value and care for the vibrant desert that exists in their very backyard.



JANE RAU INTERPRETIVE TRAIL | OKANOGAN TRAIL  
CONSTRUCTION WITH JACK GILCREST & BRUCE BARRERA



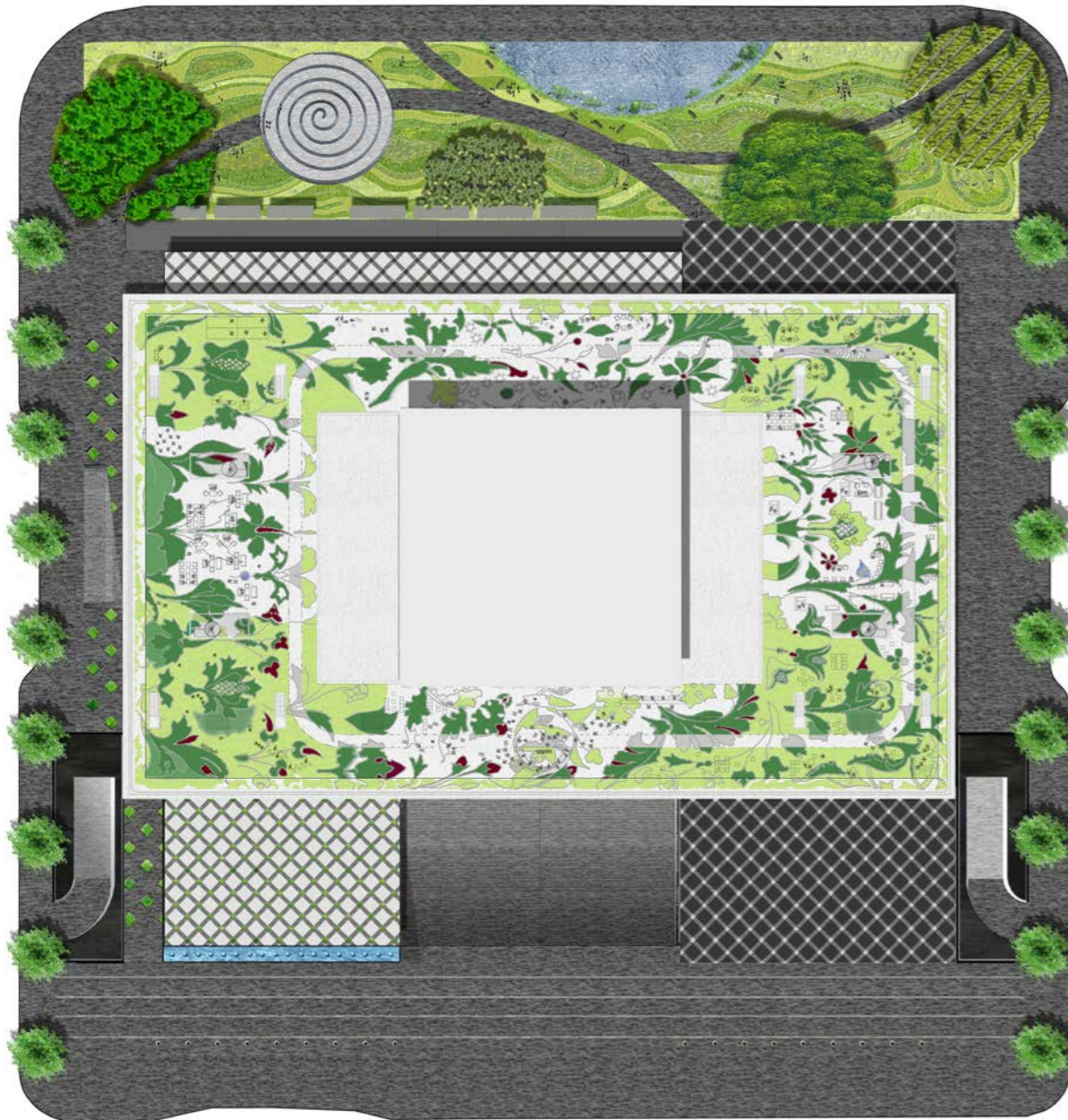
JANE RAU INTERPRETIVE TRAIL  
BROWN'S RANCH TRAILHEAD - SCOTTSDALE, ARIZONA  
Design firm | Okanogan Trail Construction (Matthew Woodson)  
Consultants | Jack Gilcrest (Landscape Architect), Bruce Barrera  
(Structural Engineer)  
Image and Text credit | Sena Woodson



# SHENZHEN STOCK EXCHANGE

INSIDE OUTSIDE

## SHENZHEN STOCK EXCHANGE | INSIDE OUTSIDE



The landscape design for the new Shenzhen Stock Exchange consists of four types of gardens that represent and reinforce the new building's architectural and cultural ambition. A spacious park along the North flank of the building and a series of Courtyards, Roof- and Sky Gardens serve as cooling screens for the building's interior and exterior climate and as relaxing areas for the staff.

Since the exchange between the Chinese and Western cultures in the 16th century and the translation of the great Chinese classics into European languages in the 17th century, Confucianism has greatly inspired western philosophy. This exchange is visualized in the Sino-European gardens where European geometry is combined with the studied asymmetry of the Chinese garden. Elements such as the circle and the path – straight or meandering – are important ingredients in both the Chinese and the Western European garden.

This design considers the Stock Exchange building and its gardens as a place where this mentality of merging cultures and ages could be rendered in a contemporary manner. By interweaving building and garden, interior and exterior, public and private, information and art, aesthetics and function, the design concept aims to integrate the past, present and future.

The East and West Plaza's and the North Park encircle the building that stands on a 4.5 hectares site. The granite-covered plaza's enter the building's entrance halls and large atrium, passing the Green Screens of the Tropical Garden which surrounds the entire base of the tower.

The public North Park consists of a series of undulating terraces filled with waving grasses, intersected by six mineral, vegetal and aquatic circles.

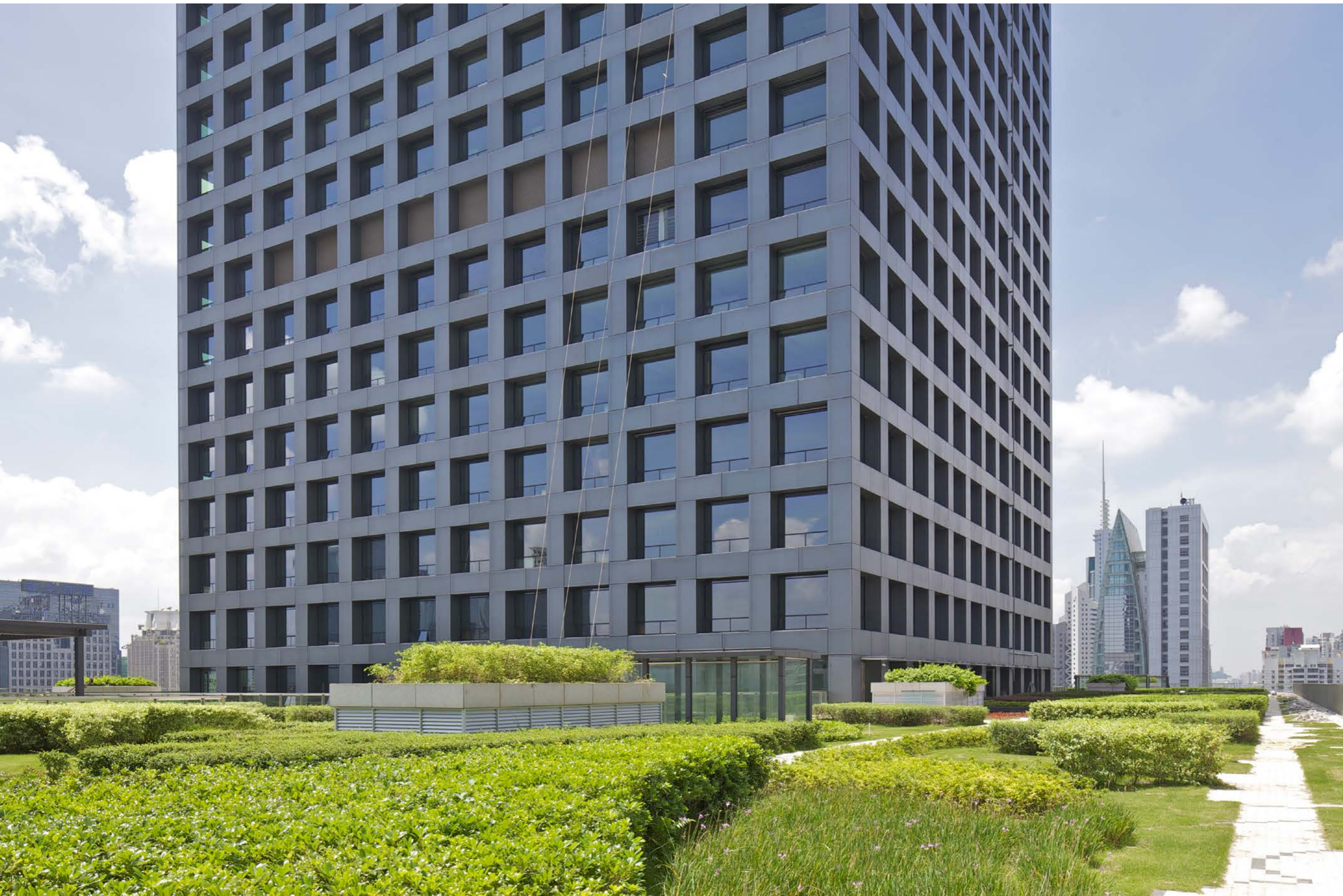
A tapestry pattern, based on a European design of the Middle Ages and referring to the traditional Chinese paper cut, unfolds into a roof garden on the building's floating podium, offering a multitude of spaces, atmospheres and functions

### Podium garden

On a tremendous overhanging roof, floating at a height of 60 meters above street level, we created a roofgarden for the extensive staff of the Shenzhen Stock Exchange firm. The floral mosaic of the Podium Garden is based on a European pattern designed in the Middle Ages. Yet the pattern could also be seen as a Chinese paper cut-out. This double interpretation is part of the landscape concept idea in which the merging of cultures is addressed.

This green "carpet" is formed by filling in the line drawing (measuring 161x 97 meters) with trimmed up shrubs and ground-cover plants that form screens of different heights; or soft, inviting carpets. To achieve a variation of spaces and spatial effects we use five different planting types: high shrubs, low shrubs, perennials, ornamental grasses and lawn.

Each plant has its own role to fulfill; the high shrubs (2m) protect from wind and sun and the low shrubs (1m) define areas. The grasses and flower bulbs provide color, movement and light. The perennials offer changing colors and scents. The lawn tempers the acoustic and gives a soft feel to the roof garden's surface.





### Tropical Garden

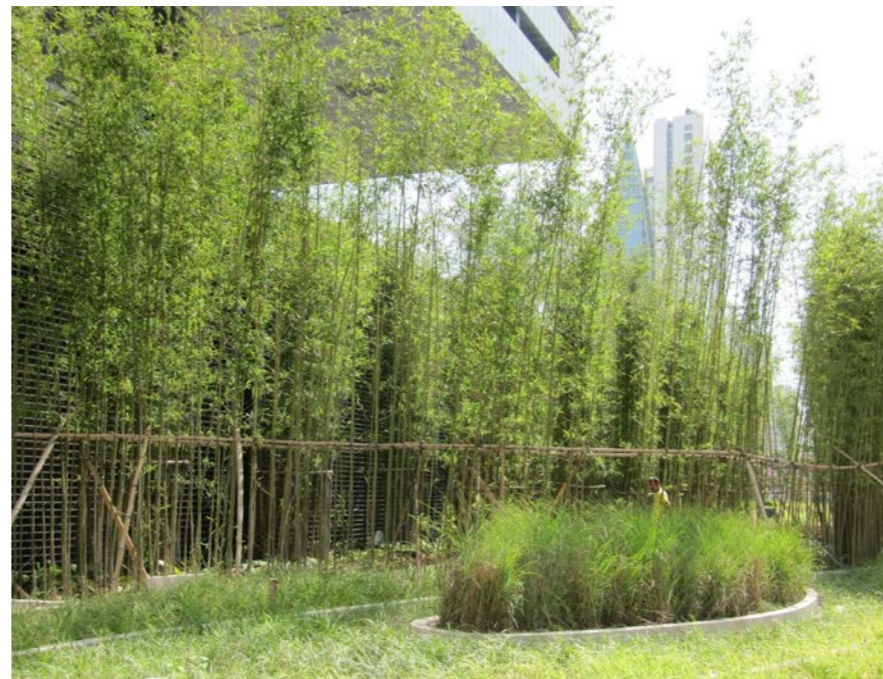
A series of double faced, hydroponic green walls and gates with an impressive height of 4.8 meters and a total length of almost 200m transform this open corridor, encircling the building, into a tropical garden. Bromeliads, ferns and orchids grow over the nutrient wall creating a lush and colorful atmosphere. The plants are all organized in vertical stripes from top to bottom creating an abstract, vegetal painting. The total surface of the green adds up to almost 1400m<sup>2</sup>.



### Sky gardens

We created four vertically organized gardens composed of linear elements with a considerable dimension. The visitor of the sky gardens will be able to take a closer look and admire the vegetation in detail. The sky gardens situated on the 11th, 23rd, 33rd and 45th floor will each have its own species so they are differentiated by means of color, texture and scent.

## SHENZHEN STOCK EXCHANGE | INSIDE OUTSIDE



Together, these five ingredients form a composition of screens and surfaces that differ in height and thickness (between transparent and opaque), in structure and color; and in seasonal effect (evergreen, seasonal, flowering, fruit- or seed bearing).

The pattern organizes the given space in a functional manner and invites for different uses including meeting, strolling, looking out, relaxing, sitting and jogging.

The local granites used on the Ground Floor and First Floor Plazas are continued on the Podium surface. Treated with the same finishes - hammered and flamed - the tiles will have different tones of grey; from very light (almost white) to very dark (almost black). The marking of a path around the building which can as well be used for running is made out of granite with a hammered finish to avoid slipperiness.



Shenzhen Stock exchange - INSIDE OUTSIDE

SCOPE of INSIDE OUTSIDE: Landscape design for public squares, north park, roof garden and interior gardens of the Stock Exchange Tower  
Architects: OMA, Rotterdam/Beijing/Hong Kong  
Engineers: SADI, Shenzhen  
Local landscape architect: SED, Shenzhen  
Lighting consultant: Arup  
Green wall consultant: Verte, Hong Kong  
Time: 2007-2013

Image Credits |  
1 (Third Page Spread) | Philippe Ruault Courtesy of OMA  
All other images | Inside Outside

# FAR EAST ORGANIZATION CHILDREN'S GARDEN

GRANT ASSOCIATES



## FAR EAST ORGANIZATION CHILDREN'S GARDEN GRANT ASSOCIATES



The new Far East Organization Children's Garden opened on the 21 January, 2014 at Singapore's Gardens by the Bay designed by Grant Associates. A major new feature of the 54 hectare Bay South Garden, the Far East Organization Children's Garden will offer a one-hectare mix of play experiences for all ages, including water play, rainforest tree houses, ridge top trails and topiary pergola arches all in a special garden setting overlooking the Marina Reservoir.

WLA spoke to Andrew Grant from Grant Associates about this new feature at Gardens by the Bay.

**WLA:** Designing a space like the Far East Organization Children's Garden must have been fun. As designers what was the fun part of the process of designing the garden?

**Andrew Grant:** To have the opportunity to develop a bespoke play space is a pretty special task in this age of off the shelf play packages, play equipment and risk management. We have had enormous fun imagining new play challenges and ideas for this project, not all of which found their way into the final scheme.

Andrew Grant(cont'd): The ideas for the Play Garden evolved over a long period but the vision from the start was to deliver a playful environment for a wide age range that evoked the magic of the rainforest. Grant Associates are not specialist play designers and perhaps the greatest fun and reward has been the opportunity to work with some very creative play designers and contractors. From an early stage we knew we needed extra skills and asked Howeler and Yoon from Boston to help us with some concepts

for water play. We then engaged with the local play contractors Playpoint and CT – Art who each brought additional ideas to the table. Playpoint introduced Carve from the Netherlands who took some of our early ideas for Treehouses and turned them into the unique play experiences you see today. Additional delight is added by the bespoke sculptures commissioned by the client. Throughout the process the Gardens by the Bay horticulture team were pushing forward with a highly immersive and playful planting concept to create shade and scale to the play areas. It was great to see huge Fig trees with masses of aerial roots added into the experience along with the ideas for topiary arches to define play tunnels.

**WLA:** Are there water efficient processes or treatments integrated into the design?

**Andrew Grant:** The general planting and hard paved spaces in the play area are part of the site wide water sensitive urban design strategy with drainage run off collected into the site wetlands, filter beds and soakaways. The water play features are subject to the stringent health and safety requirements of the local Authorities in terms of water quality.

# FAR EAST ORGANIZATION CHILDREN'S GARDEN

## GRANT ASSOCIATES



### Water Play Experience

The Water Play is the centrepiece of the Far East Organization Children's Garden. Modern water play technology, including Hydro Vaults, Water Splines and orchid-shaped splash buckets, creates an ever-changing interactive landscape of water tunnels, water mounds and waterspouts. For the toddlers, there is the Fish Fountain with fish sculptures for the young to clamber over.

### The Treehouses

Two treehouses set within a thicket of rainforest trees including quick growing Ficus brings a sense of adventure and close contact with trees. Elevated platforms and shelters linked by ropewalks, steps, ramps and slides include devices for making sounds, telescopes, climbing nets and hammock seating.

### Adventure Trail

The edge of the Far East Organization Children's Garden follows a ridge of elevated ground that overlooks the Kingfisher Lake to the south and the Marina Reservoir to the north. A series of topiary pergola arches echo the parabola arch geometry of the 'Hydro Vaults' in the water play space. Beneath the pergola is a linked series of balancing, clambering, swinging and climbing elements to allow children the opportunity to enjoy a different type of forest trail.

### Shade and an Outdoor Amphitheatre

Shade is an important ingredient of the Play Area. A leaf-shaped canopy structure provides shelter from the rain and hot sun reaching over an outdoor amphitheatre formed by stepped granolithic finish concrete benches, which will serve as a venue for different garden functions and events.



FAR EAST ORGANIZATION CHILDREN'S GARDEN  
SINGAPORE

Design Lead | Grant Associates  
Project Manager | PMLink (),  
Quantity Surveyor | Langdon & Seah Singapore  
Pte Ltd  
Lighting Consultants | LPA Inc.  
Irrigation Consultants | WET Pte Ltd  
Main Contractor | Swee Hong  
Play Equipment | Play Point Singapore Pte Ltd  
Treehouses | Carve,  
Original Concepts for Water Play | Howeler &  
Yoon,  
Water Play | CT-Art Creation Pte Ltd  
Topiaries Contractor | Candy Floriculture Pte Ltd

Image & Text Credit | Grant Associates



# GREENLAND SHENYANG PRIMUS HOTEL

ASPECT STUDIOS

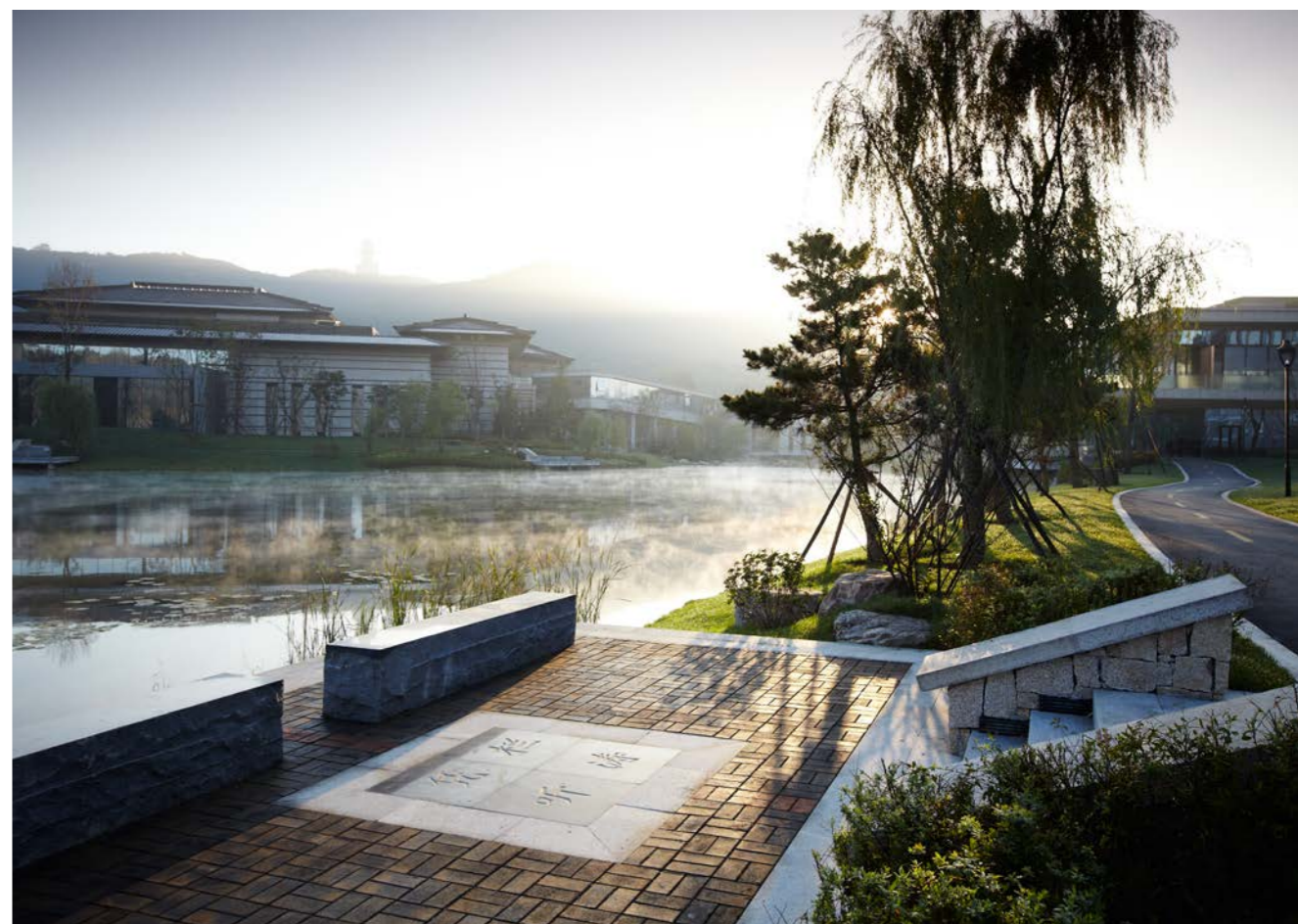


## GREENLAND SHENYANG PRIMUS HOTEL ASPECT STUDIOS

Located in the Shenyang Qipan Mountain National Scenic Area, Shenyang Primus Resort is a 67 hectare national facility which caters for eco-tourism, recreation and large-scale government events. The resort is nestled in a valley between two famous mountains; Qipan Mountain and Hui Mountain which overlooks the beautiful Xiu Lake.

The master plan incorporates the ambitious development program which includes a five star hotel, a conference centre and recreational facilities for large state functions including the State Guest House and the Liaoning International Conference Centre which hosted the reception for the Twelfth China National Games in 2013. The objective was to create an exclusive retreat that retains the natural character of the area while incorporating traditional Chinese aesthetics, in a minimal, yet contemporary manner. The surrounding landscape balances the scale of the modern Chinese architectural grouped into compounds surrounded by hilly terrain, rocky outcrops, forests and streams.

The central lake and stream is the primary landscape feature fed naturally from Xiu Lake. Courtyards, terraces and garden rooms are designed around the buildings and respond to the buildings specific functions. Natural stone walls provide a landscape plinth which unites each group of buildings. The strong linear design language of local stone is extended throughout the landscape as walls which create formal semi private courtyards, waterfront decks and outdoor dining terraces.





GREENLAND SHENYANG PRIMUS HOTEL  
QIPANSHAN SCENIC AREA, SHENYANG, LIAONING PROVINCE, CHINA

Team | ASPECT Studios  
PEDDLE THORP ARCHITECTS + Urban Architecture  
Client | Greenland Group  
Year | 2013  
Photography | Andrew Lloyd  
Text Credit | ASPECT Studios

# CHEMIN-QUI-MARCHE LOOKOUT

GROUPE IBI-CHBA

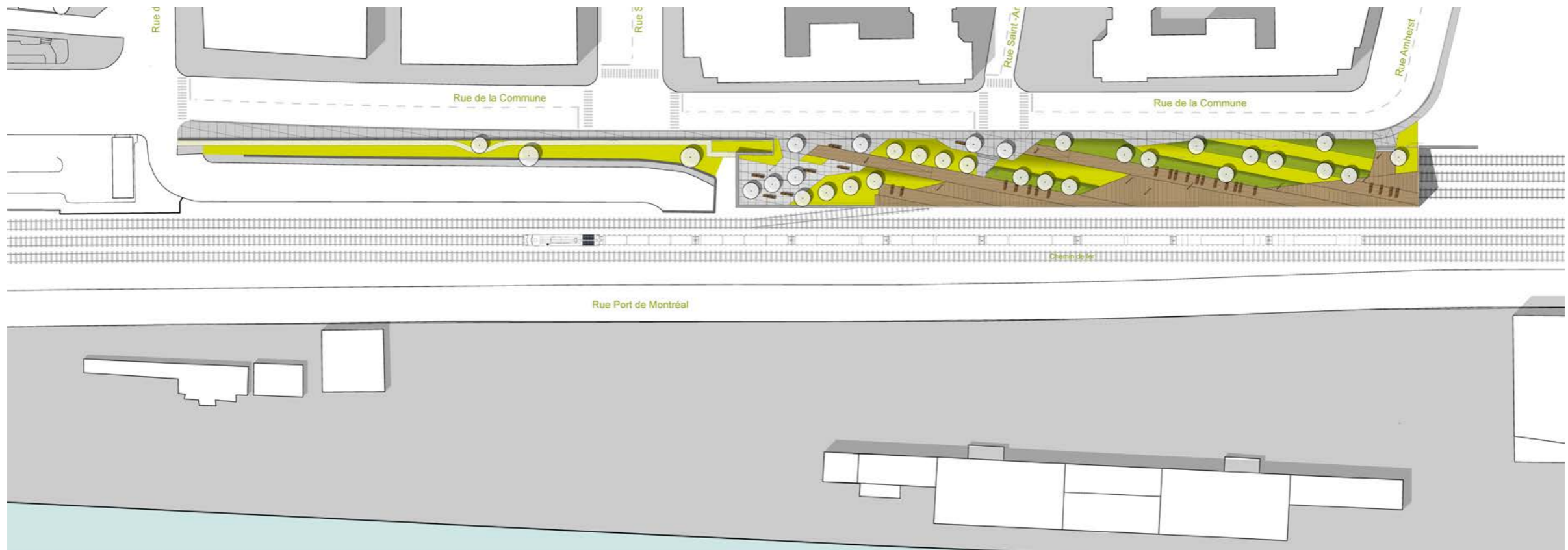


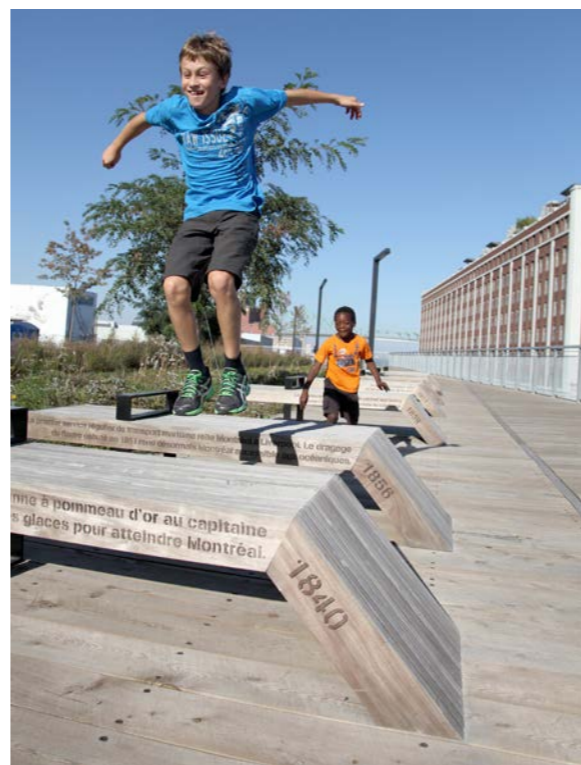
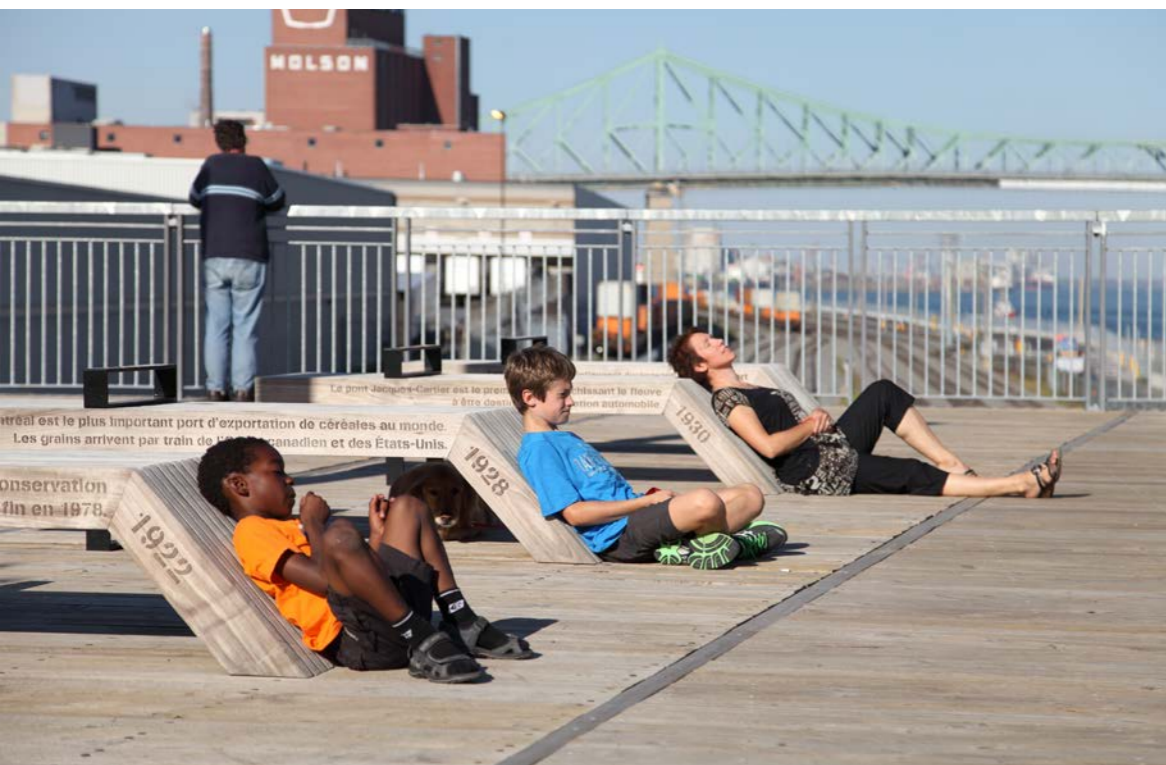
## CHEMIN-QUI-MARCHE LOOKOUT | GROUPE IBI-CHBA

The planning concept for the park is an expression of the traces of its past and the important moments of its history. The esplanade also highlights the spirit of place found in the contemporary urban grid of the neighborhood. The park becomes a witness to the site's history, commemorating it through three key landscape elements: the river and its piers, the vestiges of former railways lines, and the historic city in development.

The Chemin-qui-Marche Lookout is located at the junction of historic Old Montreal and its Old Port. Its name is derived from an aboriginal expression for the St. Lawrence River. Loosely translated, it means “the path that walks”.

Rich with hundreds of years of history that includes its still visible industrial heritage, the project revives a long-abandoned industrial site. In addition, it contributes to the rebirth of the 18th century Faubourg Québec, the first neighborhood developed outside of the city's fortified walls. Within a context of reurbanization, the park reintroduces qualities of character and atmosphere essential to the conviviality of the Faubourg.







## CHEMIN-QUI-MARCHE LOOKOUT | GROUPE IBI-CHBA

### 1. The River and Piers

During the time of intense industrial activity in Old Montreal, wooden piers marked an important line between the river and the city. In such a way, the domain of the cargo vessels was shared with the city. The linear park of the Chemin-Qui-Marche Lookout is adorned by wood decking that stretches the length of the boardwalk, in memory of the old piers.

### 2. Traces of the Railway

Numerous train lines criss-crossed the site in the early days of the city, providing access to the Port's warehouses and the former Viger Station. The current park is situated on top of a still active railway tunnel, and evokes the importance of this use. Oblique axes enter into and traverse the site. Plantings accentuate the presence of these lines, and site furniture draws inspiration from the language of the railways.

### 3. The History of the City

The site is an extension of the existing recreational and tourist network of Old Montreal. Along with the enhancement of the Faubourg Québec, the Chemin-Qui-Marche Lookout is anchored in the history of the city. Three important streets connect the park to Old Montreal. These connections create thresholds that invite pedestrians to become aware of the past, present and future of this unique place.

### The Lookout

The new layout for the park creates an unconventional terrace, suspended between the city and the river. It becomes a platform for contemplation, offering 180 degree panoramic views of many architectural, industrial and

landscape icons. The assembled views function as a stage set, bringing these emblematic witnesses of the island of Montreal to life.

### Storytelling

Wood benches, designed specifically for the project, are provided for the respite of strollers as well as for the contemplation of the site. Their angled backrests invite visitors to recline, and in so doing, to better appreciate the views. Fashioned of ipe wood, each bench is inscribed with a phrase that recounts an important event in the history of Montreal, from 1535 to the present. They are furthermore carefully positioned to direct views towards landmarks and panoramas, strengthening the connections between their engraved stories and the landscape.

### The Chemin-Qui-Marche

Both day and night, the light standards participate in the discovery of the site. An image created by tiny perforations in the steel in the form of railway crosses is visible on the posts of select lamps and illustrates the outline of the St. Lawrence River from Montreal to the Atlantic Ocean. At night, the lights are liberated by the openings, creating a poetic image at the heart of the park. Combined together, the site furnishings and lighting give the park a signature, and allow it to share the fascinating story of Montreal through time.

### A Revived Wasteland

Plantings are laid out in linear bands and accentuate the railway grid. Several varieties of indigenous plants evoke the spontaneous character of the uncultivated landscape that developed during the years when the site was vacant, and left to grow wild. Shrubs, grasses



## CHEMIN-QUI-MARCHE LOOKOUT | GROUPE IBI-CHBA

and perennials are mixed together with wild strawberries and reinforce the botanical and urban re-appropriation of the site. Trees, also indigenous, provide a vertical framework for views from the lookout.

### Regenerative Design

As seventy-five percent of the site is located on an existing railway tunnel, much of it is, in effect, a green roof. The new linear park improves the offering of green space in the neighbourhood and creates a cool and shaded retreat. In addition to native plants that optimize xeriscaping, other interventions related to environmental best practices are incorporated: the choice of light coloured materials composed of recycled, reused or sustainable materials; the sourcing of local materials and selected equipment; and the use of woods that respect the requirements of sustainable forest management.

### A place for all

With a length of 166 metres, the linear park welcomes neighbourhood residents to enjoy its fun, safe and friendly space in the city centre. City dwellers traverse it, cyclists stop by to enjoy a break, and tourists visit it to take in the views and discover the history of the city and the site. The Chemin-qui-Marche Lookout possesses the necessary ingredients to support the urban appropriation of the riverbank, and to become a landmark for the neighborhood and the city.

### A Sought-after Destination

The Chemin-qui-Marche Lookout is a living place thanks to its evocative design. Simultaneously, the elements of its composition support walking, resting and discovery. The sleek and minimalist

layout leaves room for people to inhabit it and create a unique meeting place, the spirit of which is rich and timeless. The lookout becomes, at a more modest scale, a major destination for strolling, similar to the Samuel-de-Champlain Boardwalk in Quebec City, the Wave Deck in Toronto, and the High Line in New York.

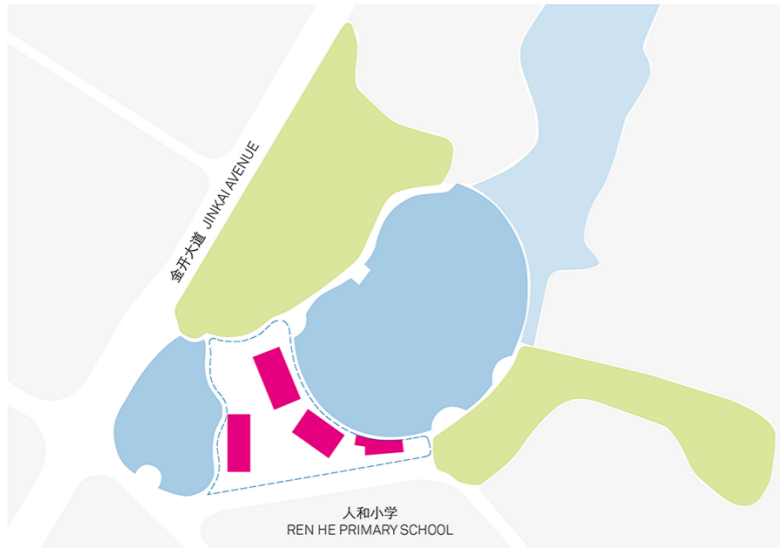
### CHEMIN-QUI-MARCHE LOOKOUT MONTREAL CANADA

Design Team Groupe IBI-CHBA |  
Project Supervisor | Isabelle Giasson  
Project Manager | Bruno Duchesne  
Lead Designer | Patricia Lussier  
Design, Working Drawings, Site Supervision |  
Jean-Philippe André  
Project Architect | Kevork Garabedian  
Photo Credits | Alexis Nollet, Alexandre  
Guilbeault, Isabelle Giasson

Lead Consultant | Groupe IBI-CHBA, Landscape  
Architecture  
Other Consultants – Engineering | Services EXP  
et AECOM  
Client | City of Montreal, Ville-Marie Borough  
City Project Manager | Andres Botero



**PALM ISLAND**  
HASSELL



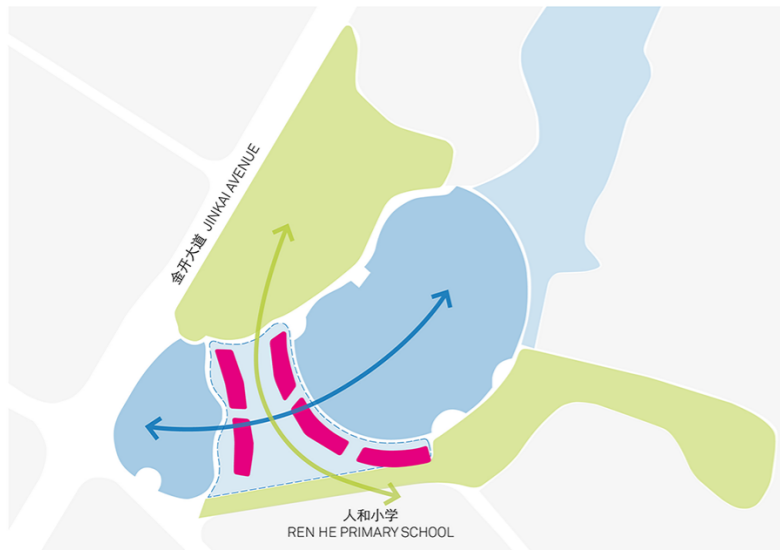
过往的平面  
PREVIOUS MASTER PLAN



水体连接  
WATER CONNECTION



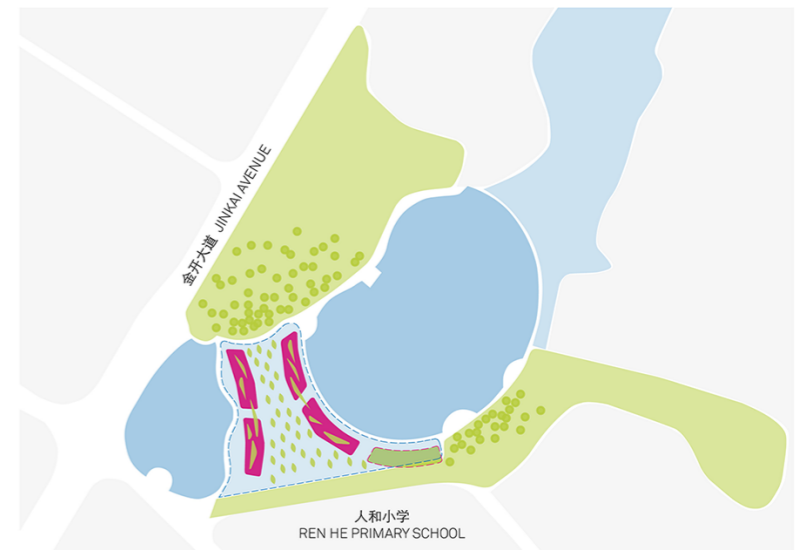
新的建筑形态  
NEW ARCHITECTURAL EDGE



新的景观链接  
GREEN AND BLUE CONNECTION



配合不同的景观元素  
NEW GREEN INSERTION



新的平面图  
PROPOSAL

## PALM ISLAND | HASSELL

Situated between the banks of Chongqing's Qing Nian Reservoir and the Palm Spring Geological Park Lake; the floating Islands of Palm Island form a new hospitality precinct within the Palm Springs International Garden.

The precinct comprises five buildings (the 'islands') collectively housing five restaurants and a teahouse, which have been unified with the surrounding landscape through the creation of a dramatic water courtyard.



## PALM ISLAND | HASSELL

The HASSELL design was inspired by the city's position at the convergence of the Yangtze and Jialing Rivers. It visually connects the reservoir and the lake; capitalising on the inherent qualities of the existing bodies of water and extending them to create a spectacular, uninterrupted waterscape and a hospitality experience that is unique to Chongqing.

Water is the key design element, and combined with the precise detailing of the built landscape and architectural elements, multiple and ever-changing perspectives have been created. Patrons at each restaurant can enjoy natural water vistas on one side and private water views of the courtyard on the other; integrated visually through the creation of an infinity pool-style water platform. This external water platform creates a continuous reflection plane and gives the impression that the buildings are floating.

Rhythmical passages of local stone slice through the platform creating central pedestrian connections. Its elevation cleverly conceals the operational aspects of the precinct, such as parking, loading areas and kitchens, and the recessed interfaces preserve sightlines while navigating level changes to the services beneath. The arrangement allows the public aspects of these dining zones to be revealed above the waterline, so that patrons are able to fully appreciate the water views in all directions.

The design optimises the interplay between light, water and form to unite the built and natural environments and create an inimitable dining experience. Each building is encased in a façade of white ceramic rods that are arranged in vertical

waves at varying thicknesses. The curved, crystal-like glass forms of the buildings combine with the strong vertical waves to alter the visual density depending on a viewer's perspective.

During the day these white sunlit contours reflect shimmering patterns on the water's surface that are highlighted against the dark underwater tiles of the courtyard; the 'vibrating' lines on the gently shifting water evoking a musical quality. At night, a dream-like atmosphere is created combining various subtle lighting effects in the landscape with dynamic lighting sleeved inside the thicker rods of the building façades. The light floods out to highlight the thinner rods, enhancing their reflections and allowing the shining wave patterns to be the strongest visual expression.

Chongqing is one of the hottest cities in China, and the need to maintain a comfortable environment for patrons and the sustainable operation of the precinct were important considerations of the overall design solution. Both the reflective façades of the buildings and the cooling breezes created by flow-through ventilation across the water courtyard help to reduce temperatures and energy use. Water is captured for use and recycled within the water features and during the dry season they are supplemented with water from the lake. Grey stone slab and native vegetation have been used for their resilience and to reflect the local character.

"The merging of innovative design solutions with the local context and culture was key in our approach to Palm Island", said John Pauline, Principal at HASSELL. "Chongqing is all about the water; we were asked to place five restaurants in

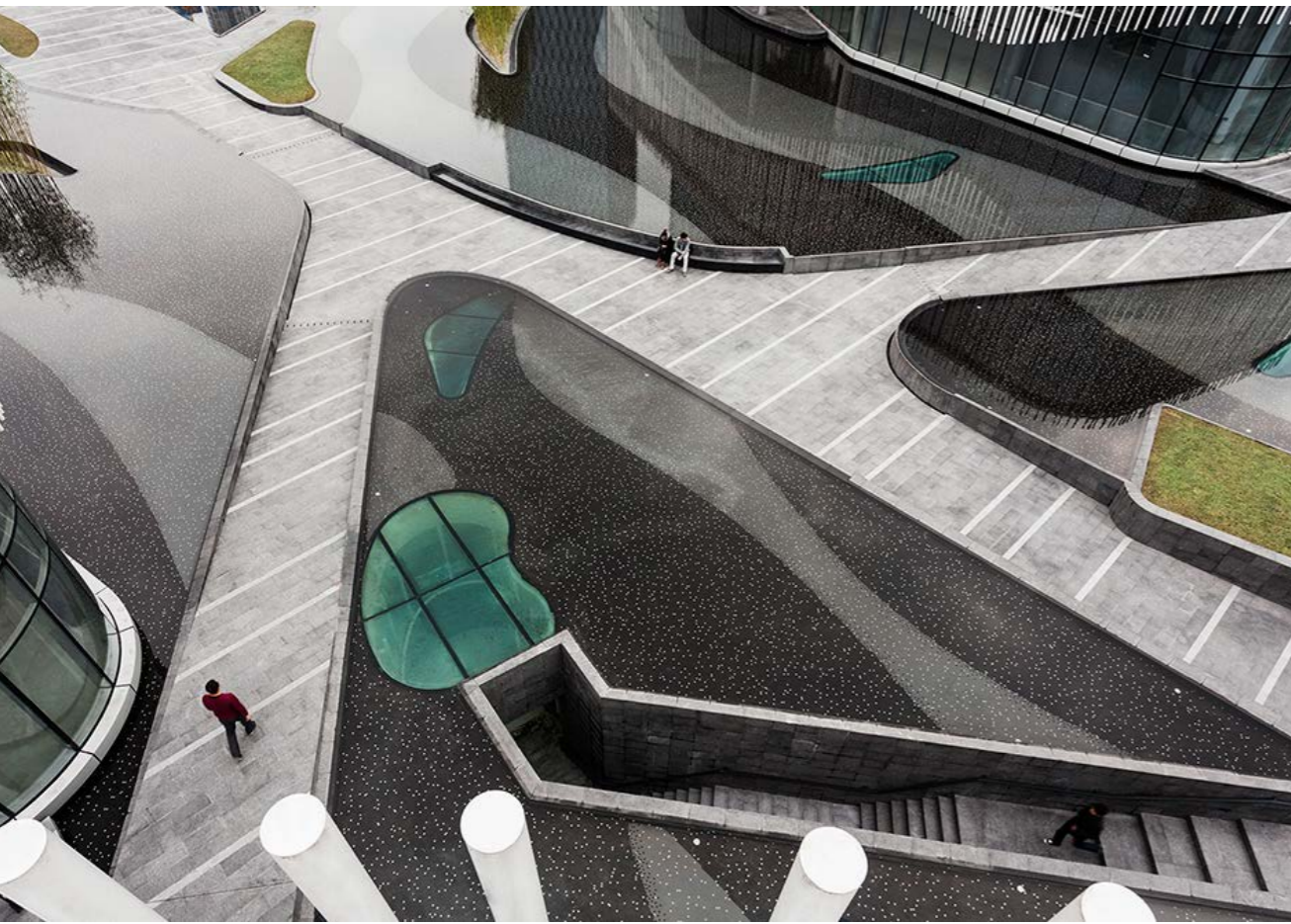




## PALM ISLAND | HASSELL

between two lakes and so our concept was to literally connect the lakes with water and to ‘float’ the restaurants on top.”

“Water is fundamental throughout the scheme. The courtyard is designed as a still reflection plane with slick edges so that the buildings can be beautifully mirrored on the tranquil water and the lighting effects can dance on the surface. We deliberately put the pathways beneath the waterline so that people can experience the water on both sides as they approach through the landscape on their way to the restaurants. Views of the surrounding waterscapes can be experienced in all directions from inside the restaurants as well”, he said.



THE FLOATING ISLANDS: PALM ISLAND  
CHONGQING, CHINA

Designer | HASSELL

Project Consultants |  
Landscape Architect / Architect / Master Planner  
/ Environmental Consultant | HASSELL

Lighting Consultant | Sichuan Ao Ge City  
Environment Installations Construction Ltd

Civil / Electrical / Mechanical / Structural  
Engineer | Chongqing Architecture Design  
Institute

Transport Engineer | Chongqing Architecture  
Design Institute

Sustainability Consultant | Chongqing  
Architecture Design Institute

Facade Contractor | Chongqing Jin Yue facade  
Construction Ltd

Main Contractor | Chongqing Jiangjin District  
Xing Mao construction ltd.

Project Manager | Chongqing Palm Springs  
Real Estate Development

Client | Chongqing Palm Springs Real Estate  
Development

Image credits |  
Photography by Luo Wen / Zhang Qianxi  
Plans / Concept diagrams by HASSELL



# BOSCO VERTICALE | VERTICAL FOREST

BOERI STUDIO

# BOSCO VERTICALE | VERTICAL FOREST

## BOERI STUDIO



The Vertical Forest project aims to build high-density tower blocks with trees within the city. The first example of a Vertical Forest is currently under construction in Milan in Porta Nuova Isola area, part of a larger redevelopment project developed by Hines Italia with two towers which are 80 metres and 112 metres tall respectively, and which will be able to hold 480 big and medium size trees, 250 small size trees, 11.000 groundcover plants and 5.000 shrubs (the equivalent of a hectare of forest). The Vertical Forest has at its heart an concept of architecture which demineralises urban areas and uses the changing shape and form of leaves for its facades, and thus which hands over to vegetation itself the task of absorbing the dust in the air, and of creating an adequate micro-climate in order to filter out the sunlight. This is a kind of biological architecture which refuses to adopt a strictly technological and mechanical approach to environmental sustainability.

**biological habitats** Vertical Forest increases biodiversity. It helps to set up an urban ecosystem where different kinds of vegetation create a vertical environment which can also be colonised by birds and insects, and thus becomes both a magnet for and a symbol of the spontaneous recolonisation of the city by vegetation and by animal life. The creation of a number of vertical forests in the city will be able to create a network of environmental corridors which will give life to the main parks in the city, bringing the green space of avenues and gardens and connecting various spaces of spontaneous vegetation growth.

**mitigations** Vertical Forest helps to build a

micro-climate and to filter dust particles which are present in the urban environment. The diversity of the plants helps to create humidity, and absorb CO2 and dust, produces oxygen, protects people and houses from the suns rays and from acoustic pollution.

**anti-sprawl** Vertical Forest is an anti-sprawl measure which aims to control and reduce urban expansion. If we think of them in terms of urban densification, each tower of the Vertical Forest is equivalent to an area of urban sprawl of family houses and buildings of up to 50,000 square metres.

**trees** are a key element in understanding architectural projects and garden systems. In this case the choice of the types of trees was made to fit with their positioning on the facades and in terms of their height, and took two years to conclude alongside a group of botanists. The plants used in this project will be grown specifically for this purpose and will be pre-cultivated. Over this period these plants slowly got used to the conditions they will be placed in on the building.

**ecology billboards** Vertical Forest is a landmark in the city which is able to release new kinds of variable landscapes which can change their form in each season depending on the types of plants involved. The vertical forests will offer a changing view of the metropolitan city below.

**management** the management of the trees' pots is under building regulation, as well as the upkeep of the greenery and the number of plants for each pot.



# BOSCO VERTICALE | VERTICAL FOREST

## BOERI STUDIO

BOSCO VERTICALE | VERTICAL FOREST  
MILAN, ITALY

Architectural project  
Boeri Studio (Stefano Boeri, Gianandrea Barreca, Giovanni La Varra)  
Bosco Verticale Landscape Design: Emanuela Borio and Laura Gatti  
Developer | Hines Italia

Supervision of works | Francesco de Felice, Davor Popovic  
Design development | Gianni Bertoldi (coordinator), Alessandro Agosti, Andrea Casetto, Matteo Colognese, Angela Parrozzani, Stefano Onnis  
Schematic design and PII | Frederic de Smet (coordinator), Daniele Barillari, Marco Brega, Julien Boitard, Matilde Cassani, Andrea Casetto, Francesca Cesa Bianchi, Inge Lengwenus, Corrado Longa, Eleanna Kotsikou, Matteo Marzi, Emanuela Messina, Andrea Sellanes

Structures | Arup Italia s.r.l.  
Facilities design | Deerns Italia S.p.A.  
Detailed design | Tekne s.p.a.  
Open Space Design | Land s.r.l.  
Infrastructure design | Alpina S.p.A.  
Contract administration (DL) | MI.PR.AV. s.r.l.

Photo Credits | Barreca&LaVarra  
Concept Section Credit | BOERI STUDIO

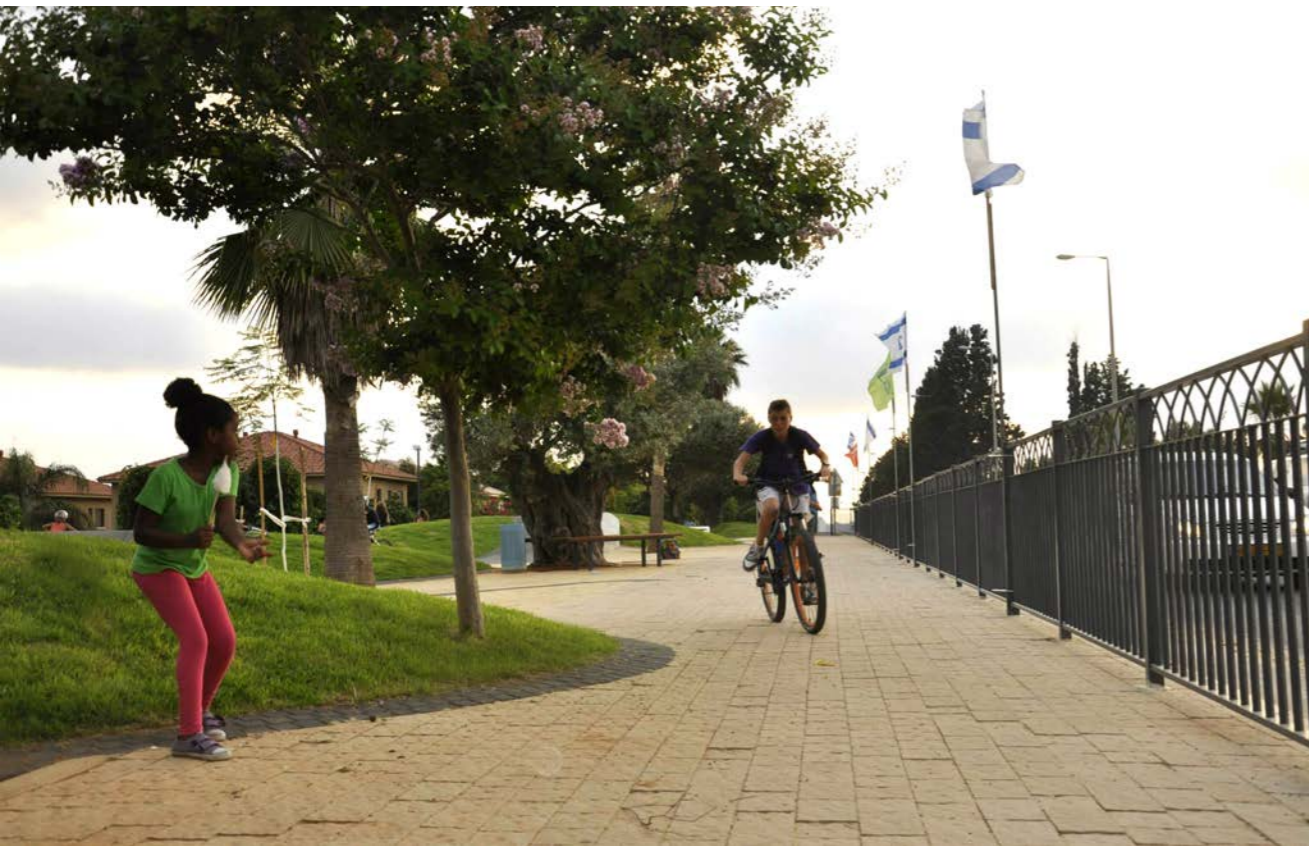




# SPORT-PROMENADE

BO-LANDSCAPE

## SPORTS PROMENADE | BO-LANDSCAPE



Sport-Promenade Binyamina is an open public space that constitutes part of the network of current and planned bike paths in Binyamina, on the Israeli Coastal Plain.

This public space provides room for neighborhood residents, children, pedestrians, bikers and skaters to meet. The project was established at the front of a new commercial center nestled between residential neighborhoods. The Sport-Promenade is located on an extensive promenade that connects the coast highway to the town.

Public spaces fulfill an important social, community and neighborhood function. In addition to providing a shopping center that facilitates a traditional merger of commerce, socialization and recreation (a combination that does not exist in most shopping centers), it also offers room for sports, reflecting contemporary design.

Special emphasis was placed on the connection to the regional vista and local language. The old olive trees were preserved and optimally incorporated in the planning. Inclines are covered in flora planted in orthogonal lines reflecting the local orchards and vineyards.

The promenade allows visitors to participate in a variety of sporting activity free of charge in an open and shaded environment: an extreme asphalt path winds around six hills, providing room for a humoristic three-dimensional space. Alongside the path is an area that contains fitness equipment: horizontal bars, parallel bars, pole, ladder, etc. Wide benches are scattered in paved areas, allowing visitors to sit and meet as well as providing an option to participate in other sporting activity.

The area is designed as a city square, allowing for activity for many ages. Near the playground and fitness facility are two linear spaces: one for walking and traveling and the other, an extreme path for skating and riding along the hills. Although the areas of activities are placed side by side, each activity has its own defined and unique area.

Strong emphasis was placed on reducing the amount of gardening areas and on providing optimal shading for the space to create a pleasant, comfortable micro-climate throughout the year. Large, deciduous trees were planted to provide significant shade in the summer and maximum light in the winter. The lawn areas were limited to hills, offering room for informal seating and meetings.

This planning creates a significant community environment that encourages meeting as well as an array of sporting activity. Sport-Promenade Binyamina is a focal point for local residents in general.

The promenade serves as another important anchor in the walking and bike path network in Binyamina, which serves as an active and vibrant gateway to the town.





SPORTS PROMNEADE  
BINYMINA ISRAEL

Designer Bo-landscape | Orna Ben zioni & Beeri  
ben shalom  
Client: Binyamina- Givat Ada Municipality  
Area: 2.5 Dunam





# DÖDERHULTSVIKEN

MANDAWORKS, ADEPT, HOSPER SWEDEN, WSP



Döderhultsviken | Oskarshamn Sweden | Mandaworks, Adept, Hosper Sweden and WSP  
 CLIENT: Oskarshamn Municipality

## DÖDERHULTSVIKEN

### MANDAWORKS, ADEPT, HOSPER SWEDEN, WSP

Oskarshamn is a small harbor town on Sweden's east coast with a population of 17,258 in 2010. It sits midway between the summer town of Västervik and the university and cultural city of Kalmar. Characterized by the port industries and businesses, the city relationship with the water has changed dramatically within the past 100 years as the natural bay, Döderhultsviken, has been transformed by the city's harbor activities. After years of changes in the port industry, demands for larger areas and harbor depth has moved much of harbor industry out of the inner harbor and onto new quays further from the city center. With the goal of developing new visions for their inner harbor, Oskarshamn municipality invited 3 teams to develop proposals for city's inner harbor.

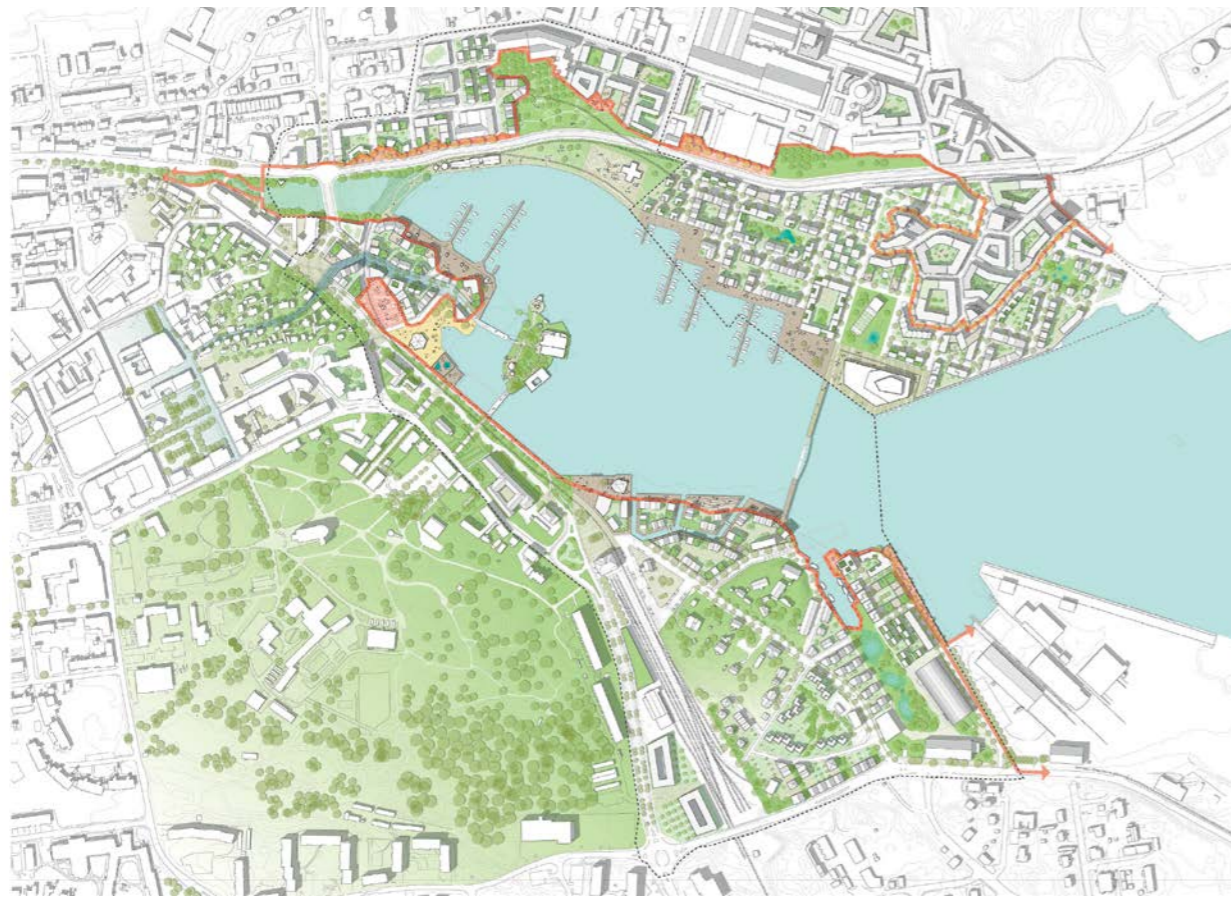
It is on the waterfront where Oskarshamn began and it is on the waterfront where Oskarshamn's future lies. Our proposal, Döderhultsviken, utilizes the historic coastline to bring Oskarshamn's local identity down to the water by re-linking to the bay's natural history, revealing the hidden potentials of the existing context, and creating a diverse series of environments that together bring new qualities for Oskarshamn to grow around.

In our vision the historic coastline Döderhultsviken is the area's backbone and provides a structure which binds together the community's future waterfront. The coastline creates a buffer zone against high water (sea level rise) and frames the new development by integrating public spaces such as the Bohman's park, the city beach and the new square at Bradholmen.

Additionally, the coastline tells the story of the city's rich history around the water by revealing the different time periods and transformations.

Over time the historic coastline forms a loop of activities that reconnects the city to Döderhultsviken. The future loop is composed of a diverse series of new developments that collectively creates a public promenade that links the existing & the new. The loop connects to the existing context and utilizes the local identities that lie behind the plan area boundary to inspire the proposed waterfront developments. By bringing the existing characteristics of Stadsparken, the city center, Besväret, and Döderhultsbäcken to Oskarshamn's new waterfront, the city's existing identity is strengthened and a diversity is created.

Our vision for Döderhultsviken is built up through a series of two intermediate loops & strategic steps that begin the process of reconnecting Oskarshamn to its bay. The first steps are presented in the 2030 plan as strategic projects aimed at defining the potential of the historic coastline, bringing qualitative public spaces to the water, and creating new opportunities for living along the water's edge. And, in the 2050 vision, the power of the loop reaches its potential as the promenade is closed through a new bridge, lock connection that connects Norra Kajen across the water to the planned developments around the travel center.



VISION 2050



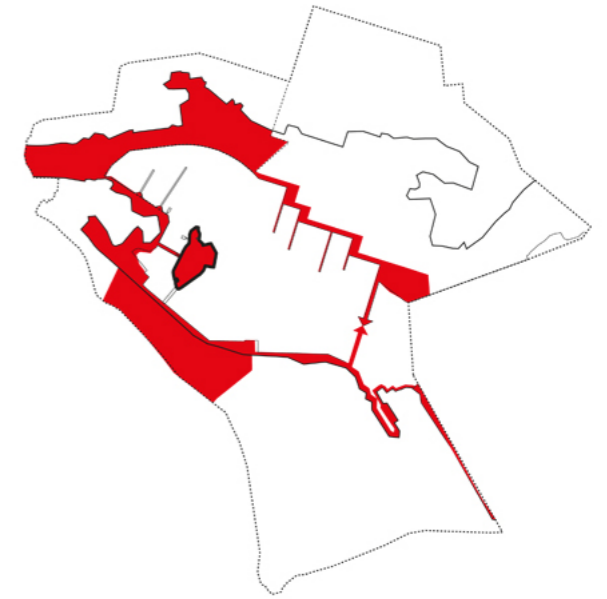
HISTORIC COASTLINE



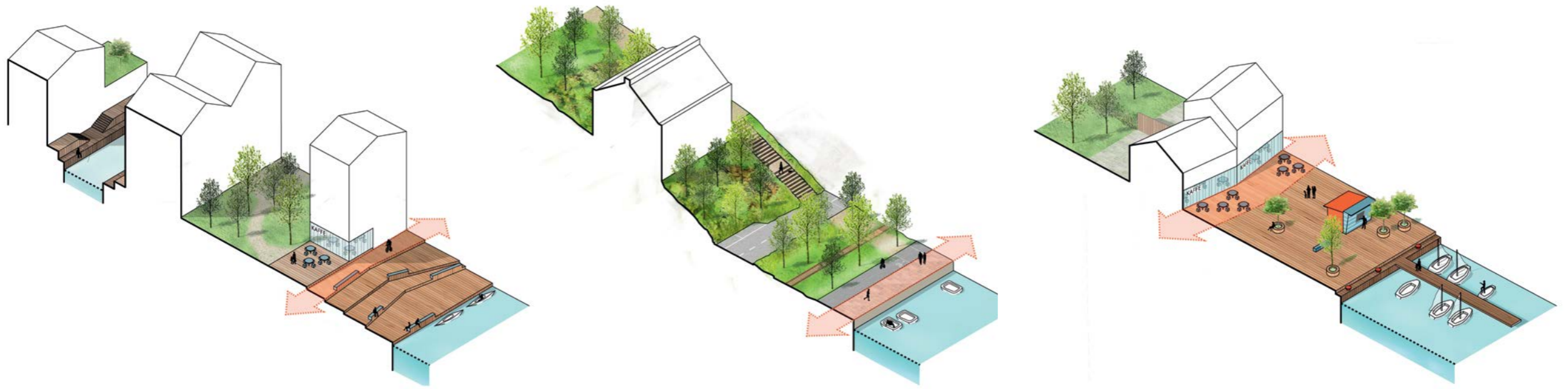
PUBLIC SPACES ALONG WATERS EDGE



CITY EXTENSION



THE LOOP



WATER EDGE TREATMENT OPTIONS



TYPICAL SECTION IN SOUTHERN AREA

# DÖDERHULTSVIKEN

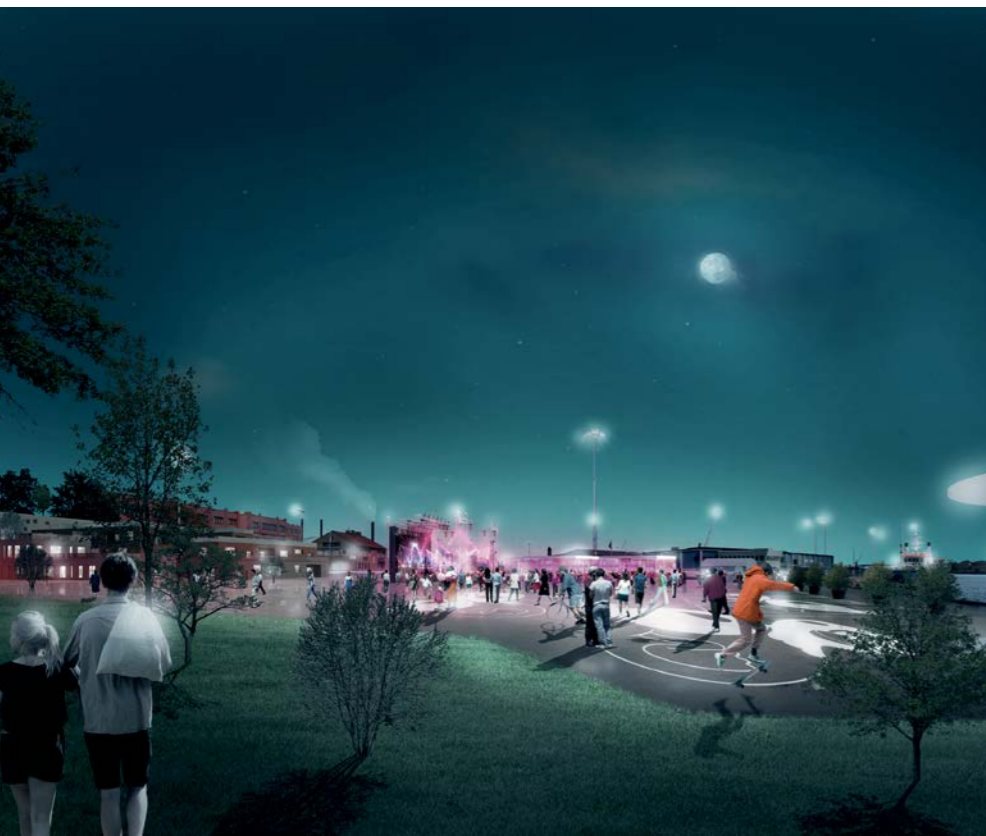
## MANDAWORKS, ADEPT, HOSPER SWEDEN, WSP

Döderhultsviken |  
Oskarshamn Sweden

Design Team  
Mandaworks, Adept, Hosper Sweden and WSP

Client | Oskarshamn Municipality

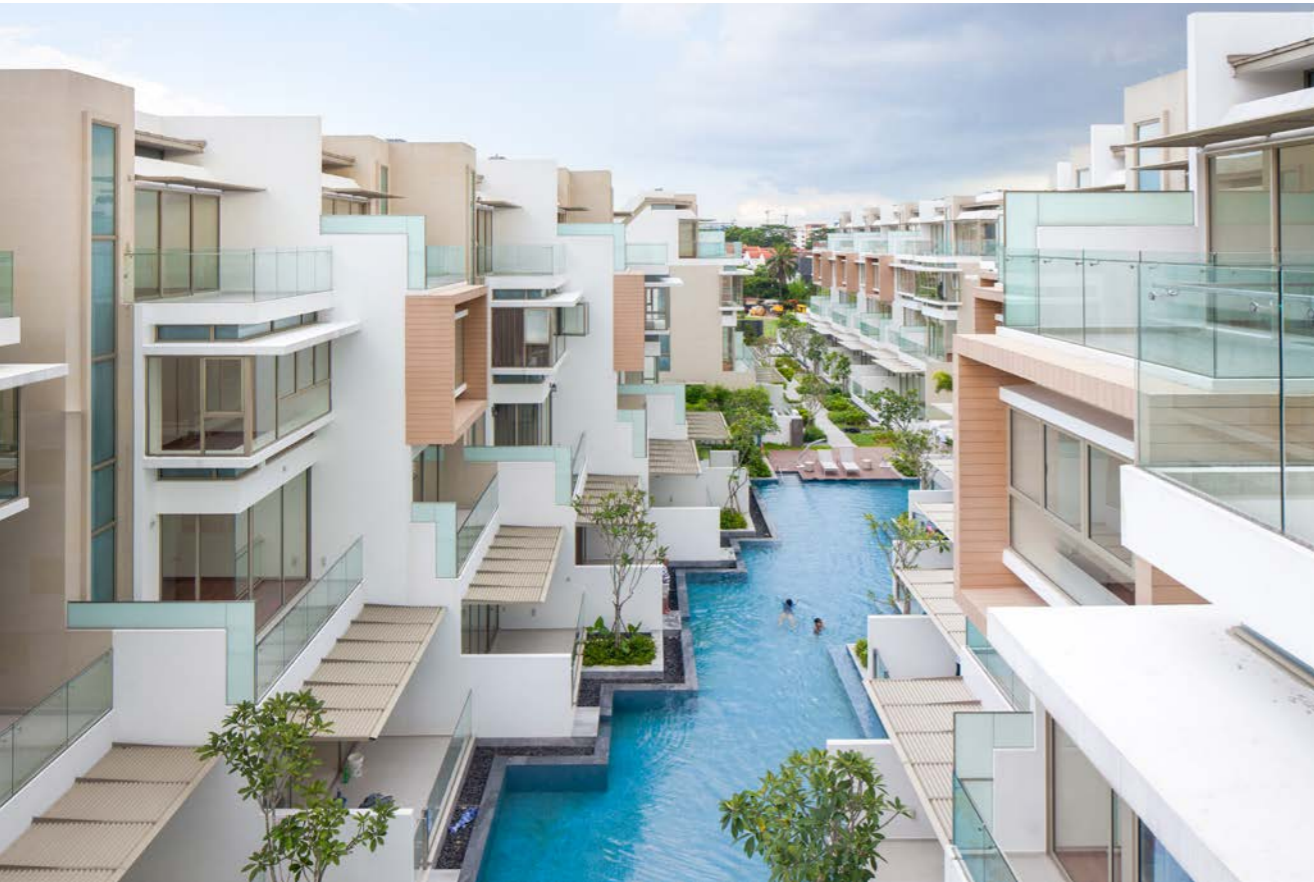
Image & Text Credit  
Mandaworks, Adept, Hosper Sweden and WSP





# ESTE VILLA

ONG&ONG



## ESTE VILLA | ONG&ONG

Este Villa is a freehold cluster residence that is nestled within a quiet, private residential enclave in the Seletar Hills Estate. Located within close proximity of the development are major roads and expressways, retail and dining amenities, recreational facilities as well as well-known educational institutions, creating a perfect balance between exclusivity and connectivity.

Inspired by nature and its organic forms, Este Villa offers a holistic living experience and interweaves many nature-inspired, unique facilities such as the clubhouse, dining pavilion and hammock court throughout the development, providing residents and guests with the opportunity to immerse themselves in and be one with nature.

The conceptualisation of the design theme saw the four elements of nature – fire, earth, water and air – forming an essential part of the development's design. The path to Este Villa is lit with symbolic fire, with Flame of the Forest trees (also known as Fire Trees) lining the façade along Nim Road. A tiered water feature with jets greets residents and their guests at the entrance; the water feature seemingly morphs into a welcoming fire at a warm hearth when nighttime arrives. A dining pavilion floats above the water surface on the upper tier of the water feature.

Alongside the water feature, a meandering path weaves its way from the entrance forecourt through a tree grove where dappled sunlight filters through. From here, one may head straight on towards the clubhouse and semi-detached cluster or veer off the path towards the bamboo promenade and the main residential clusters that lie beyond.

Recreational and reflective pools also form avenues leading to the residential clusters, where one's home opens to the water and gives an illusion of a floating home. This is very much reminiscent of traditional water villages, where homes are connected to one another via boardwalks and footbridges. Enhancing this parallel are the timber finishes to the boardwalk along the main circulation spine of Este Villa that separates the eastern and western residential clusters, calling to mind the timber jetty of the traditional water villages while softening the landscape.

The deck spaces by the pool are similarly finished in timber. There are two main lap pools – a 60-metre lap pool located at the residential cluster immediately behind the entrance forecourt and a 30-metre lap pool at the indoor gym. A lagoon spa sanctuary completes the offering of water-related amenities with integrated spa facilities offering spa beds, spa seats and foot massage jets.

With landscape elements such as trees and shrubs providing shade and improving air quality, as well as water acting as a natural cooling agent, natural ventilation flows throughout the development. One may take a cool, leisurely stroll and depending on the path taken – be it the flower trail, the hedge walk, the bucida grove, the pebble walk or many other gardenscapes – enjoy different experiences of nature and nature's beauty throughout Este Villa.

The multitudes of gardenscapes and the careful integration of the various elements successfully immerse Este Villa in nature and brings a piece of haven into the comfort of one's home.



## ESTE VILLA | ONG&ONG

ESTE VILLA  
SINGAPORE

Design Firm (Landscape Design) |  
ONG&ONG Pte Ltd  
Consultants Architect | AGA Architects Pte Ltd  
C&S Engineer | KTP Consultants Pte Ltd  
M&E Engineer | Rankine&Hill (S) Pte Ltd  
Photography Credits | Khoo Guo Jie  
Text Credits | ONG&ONG Pte Ltd

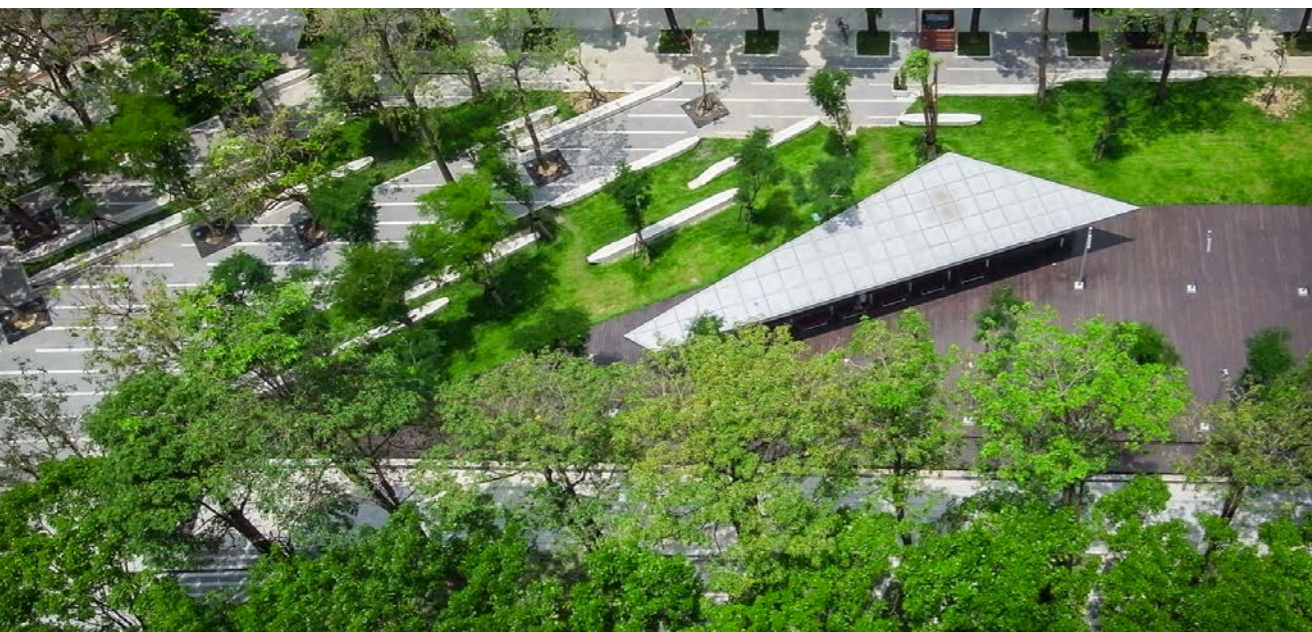


# TAICHUNG GREENBELT

AECOM



## TAICHUNG GREENBELT | AECOM



After the City of Taichung was awarded the title of 'World's Best Cultural and Arts City' by the World Leadership forum in 2007, the city embarked on an agenda to revitalize the existing three kilometer long pedestrian greenbelt in an effort to rejuvenate the city and attract tourists and locals. They engaged us to regenerate the badly maintained greenbelt into a city wide park that incorporates innovation, sustainability, recreation and leisure entertainment. And, with the mandate to transform the greenbelt back into a key part of the urban framework in an effort to promote the city's vibrant cultural lifestyle and demonstrate its commitment to social and environmental sustainability.

The design is inspired by the art of calligraphy and the play of a brush dancing on a bamboo scroll. With this as inspiration, the name 'Calligraphy Greenbelt' was given by the city to this newly revitalized piece of the public realm. The contrast and beauty of black characters on white parchment is a metaphor for the design of the greenbelt. The detailing between natural and hard surfaces represents the grain of ink brushed on to the texture of paper. The programming of the greenbelt spaces was carefully positioned adjacent to existing and new urban uses to reconnect the multi-layered aspects of Taichung to the urban fabric. This composition of space represents the lightness and intensity of a brush stroke from calm to active. From the two dimensional artistry of calligraphy, landscape, paving, planting and water transform this idea and art form into a three dimensional environment for locals and tourists to inhabit and activate using tactile, auditory and visual cues.

The overarching urban landscape design is emboldened by four key concepts, to reconnect, to enliven, to reactivate and to amplify the ethos of arts and culture to the city and public realm of Taichung. The first phase of the project is approximately three (3) kilometers long and six and a half (6.5) hectares. It connects two important science and art institutions the Taichung National Museum of Natural Science and the National Taiwan Museum of Fine Arts. By articulating the greenbelt as a larger green urban structure of Taichung, the design has become a 24 hour activity zone highlighting and supporting the city's vibrant culture and lifestyle.

This project constitutes the first phase of a larger urban design plan and is the linked portion of the old city and new town urban greenbelt strategy. To demonstrate the impact of this project it was fast tracked with construction taking place over the course of a year. The Taichung 'Calligraphy Greenbelt' opened to the public in the Spring of 2012. The project has been well received and heavily used by locals and visitors to Taichung city.

### Sustainability in Design

Our design took a human oriented, energy efficient approach. One of the key aspects in the design was to retain all of the existing mature trees within the greenbelt. The design team worked diligently with this criterion carefully placing new pathways and gathering areas so as not to impact the health of the trees, with a focus on improving their condition. The planting systems and species were carefully considered to maximize the appearance and infiltration. Another key goal was in efficient water management and water recycling. With this, permeable paving, bio



## TAICHUNG GREENBELT | AECOM

swales and channel drains were designed in to the greenbelt paving and drainage systems as a holistic and necessary design element to filter, collect and reuse to irrigate and replenish the water table.

**Celebrating the Spirit of the City and the Site**  
Understanding and respecting the heritage of the city and the site were critical in formulating the design. One of our main principles was to preserve the essence and spirit of Taichung and its creative spirit and laid back lifestyle. Through research and knowledge of the city, we were able to thoughtfully assess the site and our design in terms of scale and urban density to develop the design language that speaks of its character.

**Cultural Amplifier**  
Inspired by philosophy of Chinese calligraphy the design aims to express its cultural essence through fluid motion and artful cultural and social interventions. In the design the spaces, we looked at ways for local residence and visitors to use the spaces in a way that draws on their heritage and to gain new perspectives on their own experience of Chinese culture. Places for dance, exercise, exhibition and performance spaces are intertwined with places that can express the city's culture of arts and literature recreation and a leisure lifestyle.

**Active Public Spaces are Good Business**  
The Taichung greenbelt has become a major public amenity linking people, place, art and culture. By reconnecting public realm to maximize the relationships of adjacent cultural institutions, residential development and commercial activities as well as successfully

reorganizing future urban development, the land values around the greenbelt have increased by more than 20%. With the greenbelt dramatically increasing the areas desirability, retail activity and capital improvements to older hotel and retail properties have transformed and revitalized the urban environment surrounding Calligraphy Greenbelt. From its initial planning to the constructed project today, the revitalization and design of the greenbelt has translated the ideas of Chinese Calligraphy and landscape design into a mechanism for increased tourism and economic development surrounding this newly transformed public space.

**The Calligraphy Greenbelt**  
As we assess the design of the 'place' and evaluate the expectations set forth by the city of Taichung, the realization of 'Calligraphy Greenbelt' has been able to instill a renewed spirit to a neglected section of the city and has underscored the value of a robust public realm. The inspiration and translation of the concept lead us through the process of designing an urban system that integrates environmental, social and economic sustainability as a holistic approach to an urban landscape. The design is rooted in the place, in the culture and as the greenbelt becomes a greater part of the social and urban fabric of the city, a place that continues to evolve.



# TAICHUNG GREENBELT

AECOM



TAICHUNG GREENBELT  
TAICHUNG, TAIWAN

Design Firm | Aecom Asia Company Limited  
Design Team | David Jung, Ryan Hsu, Yatung Tsai, Vorrarit Anantsorarak, Kerby Chou, Chunhan Lu  
Consultants | Hua-Li Landscape Company Limited (Landscape Contractor)  
Image & Text Credit | AECOM

# COMPLETE SCHIEDAM

BASIC CITY + FELIX LANDSCAPE ARCHITECTS





## COMPLETE SCHIEDAM

### BASIC CITY + FELIX LANDSCAPE ARCHITECTS

The plan embraces Schiedam's exceptional urban setting in which the historic core of the city and the city's industrial zone coexist in an extremely close proximity. It connects these two conditions into one functional and legible whole and reveals their dramatic juxtaposition. As a result, the plan reinvents the city's identity and moves it towards the image of a vigorous urban condition with a bright future.

#### Back to the water

To realize the ambition we based our proposal on the reestablishment of the Lange Haven and the connected space along the Schie Canal to the south as the main spine of the city. Stretching from the train station to the Maas River, cutting straight through both, historic city and industrial zone, the canal is the logical city connector. It is the focal city space towards which all the public space should gravitate.

#### Strategy for incremental development

A flexible framework has been set up, identifying spots and areas of interest along the canal. The framework allows for gradual transformation of those places in time. From minor short term interventions like activating plinths and public spaces to the optimization of the distil cluster and the larger scale redevelopment of the New Mathenesse on the longer term.

#### TWO KEY STRATEGIES FOR THE PROJECT AREA

The project area is one of the main keys for the fundamental transformation of Schiedam's identity. It holds the potential for a genuine re-stitching of the city's fragmented spatial

framework and shifting its focus towards the Schie Canal. A meeting point between industrial zone and historic town consists of two elements: Koemarkt square and VROM site.

Two very different spatial development strategies are envisioned for the two most important places on the site.

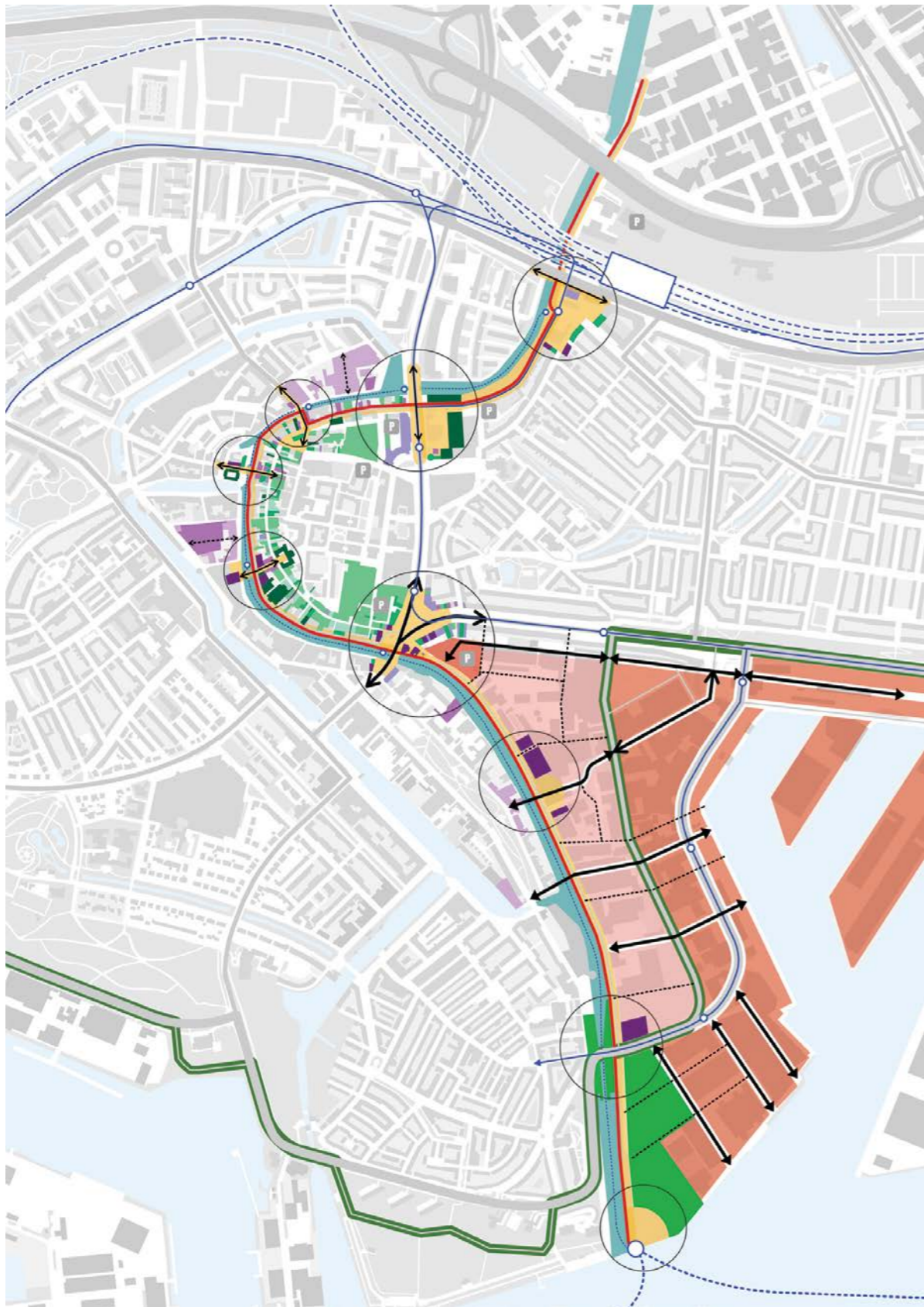
Clean the Koemarkt! - The square is cleaned from all the noisy details and obstacles. It defines the entrance to the historic city. At the same time a simple and connecting surface of the square stretches all the way to the Schie River.

Densify the VROM site! - VROM site is envisioned as a programmatic booster. Scale and type of program are complementary to the historic city and industrial zone. A new destination in Schiedam. Easily reachable from Koemarkt square it extends into the industrial area and opens up that part of the city!

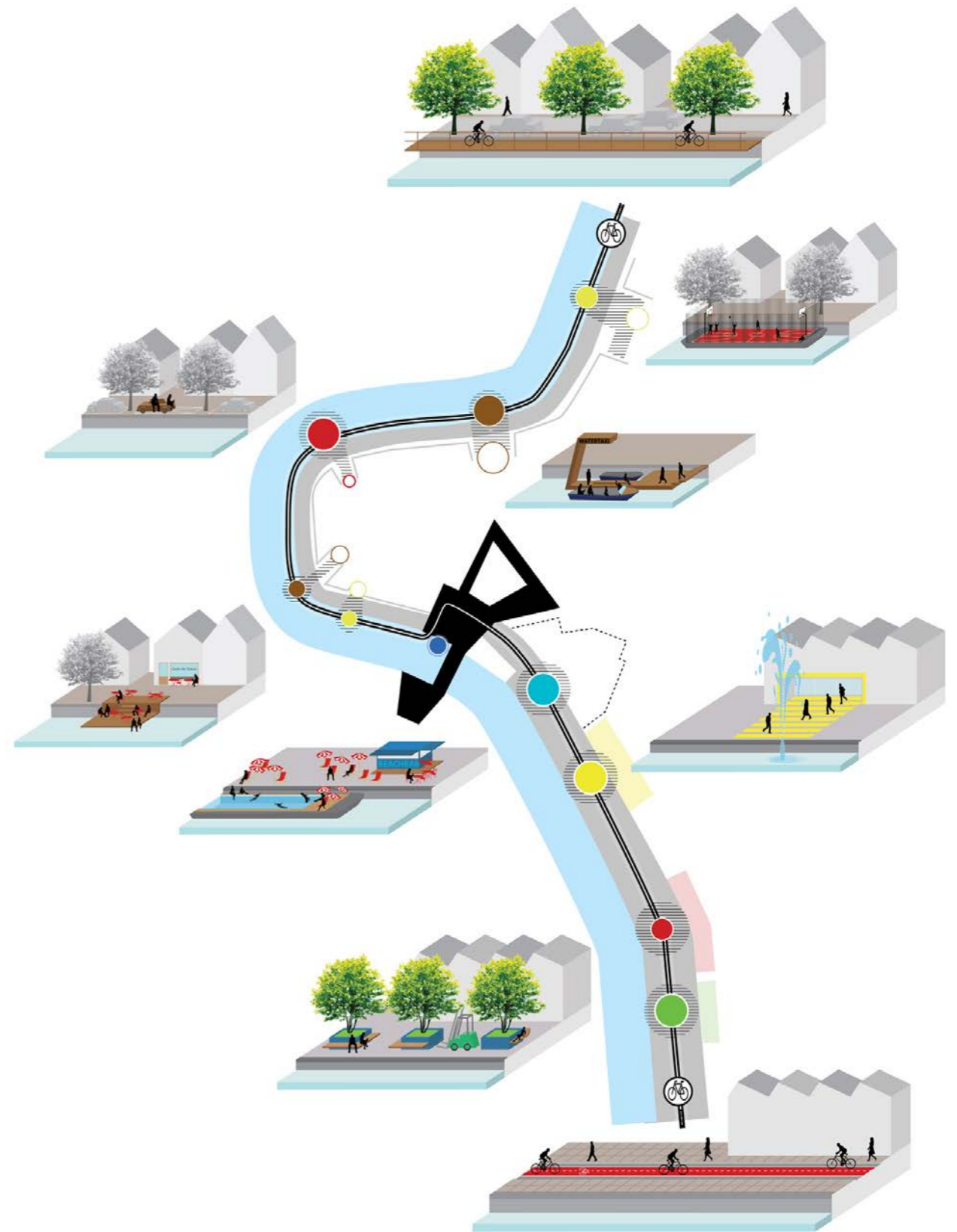
Instead of a specific program and architecture for the VROM site, we proposed a plan that would enable and structure participation of different stakeholders through time. It is determined by two main ambitions: making conditions for the creation of knowledge in order to facilitate the future advancement of city's existing industries and focusing on uses that are complementary to the Schiedam's existing functions.

#### EUROPAN COMPETITION

On the 13 of December 2013, the results of the 12th edition of European have been announced. We feel honored that our entry COMPLETE



CITY SCALE FRAMEWORK



CANAL ACTIVATORS

# COMPLETE SCHIEDAM

## BASIC CITY + FELIX LANDSCAPE ARCHITECTS

SCHIEDAM was chosen as one of the two winning plans out of 48 entries for the project site of Schiedam(NL).

Europaan is a European competition of ideas for young spatial designers. With this competition Europaan aims to give form to a Europe in which young and highly-promising designers can contribute to innovations in the field of spatial design.

COMPLETE SCHIEDAM, LAUREATE AT  
EUROPAN COMPETITION  
SCHIEDAM, THE NETHERLANDS

Companies | Basic City + Felix landscape architects

Team: Matteo Bettoni, Deborah Lambert, Bart Pouw, Michiel Van Driessche, Marnix Vink, Milena Zaklanovic, Petar Zaklanovic

image & Text Credits | Basic City + Felix landscape architects



# 2014 OUTLOOK SURVEY

## WORLD LANDSCAPE ARCHITECTURE

### POSITION

Principal/Partner/Director/C-level/Business Manager	27.78%
Manager (Business/Operations/Marketing/Financial)	1.71%
Senior Associate/Associate	11.11%
Senior Landscape Architect	21.79%
Intermediate Landscape Architect	14.10%
Junior Landscape Architect	21.79%
Administration	0.43%

### COMPANY TYPE

Landscape Architecture only	37.66%
Multi-discipline (Landscape, Urban, Architecture...)	50.21%
Government	4.60%
Construction	4.18%
Consultant (Lighting, Audio, Irrigation, Horticulture,)	1.67%
Supplier (Nursery, Paving, Furniture, Technology....)	1.67%

### COMPANY SIZE

1	9.39%
2-5	22.86%
6-10	13.06%
10-20	14.69%
30-50	12.65%
50+	27.35%

### LOCATION

USA	35.78%
Australia	9.48%
Canada	6.47%
Netherlands	6.47%
China	5.17%
UK	5.17%
Spain	3.02%
Turkey	3.02%
Portugal	2.16%
India	1.72%
Germany	1.72%
South Africa	1.29%
Belgium	1.29%
Ireland	1.29%
Italy	1.29%
New Zealand	1.29%
Others	13.36%

### FIRM's LARGEST SECTOR

Residential (Single Houses & Developments)	26.32%
Government (Public Spaces, Recreation, Studies)	26.32%
Commercial (Retail, Hospitality, Office)	16.60%
Infrastructure (Roads, Transport, Rivers, Green Infrastructure)	8.91%
Educational (Schools, Universities)	7.69%
Environmental (Revegetation, Wetlands, Reclamation)	5.26%
Industrial (Factories, Mining, Plants...)	3.20%
Other (Tourism, Heritage, Energy)	6.07%

### FIRM's LARGEST SECTOR

Residential (Single Houses & Developments)	26.32%
Government (Public Spaces, Recreation, Studies)	26.32%
Commercial (Retail, Hospitality, Office)	16.60%
Infrastructure (Roads, Transport, Rivers, Green Infrastructure)	8.91%
Educational (Schools, Universities)	7.69%
Environmental (Revegetation, Wetlands, Reclamation)	5.26%
Industrial (Factories, Mining, Plants...)	3.20%
Other (Tourism, Heritage, Energy)	5.70%

### HIRING EXPECTATIONS

Not Hiring in 2014	32.2%
1-3	45.61%
3-5	10.4%
5-10	6.28%
10-20	2.51%
20+	3.00%

In December 2013, World Landscape Architecture held a web survey to gauge our readers on their outlook for 2014.

### CONFIDENCE

And the results are showed that readers were confident about the year ahead with 40.98% stating they are *Confident* and 12.7% seemly *Very Confident* about 2014; 40.98% of responders feel the 2014 outlook was OK, 11.07% Not Confident and 4.51% Very Cautious.

### PERFORMANCE

A similar story was told when ask how their companies performed in 2013 with 34.71% G00d and 13.22% Beyond Expectations and 38.43% As Expected. Some didn't see their companies perform that well in 2013 with 9.5% Poor and 4.13% Very Poor.

### GROWTH SECTORS

Most firms are expecting to see growth in Residential(28.26%), Government(27.39%) and Commercial(17.83%) work with smaller growth expected in Education(7.83%), Infrastructure(9.57%), Industrial(3.48%), and Environmental(5.65%) work.

NOTE: This survey was conducted as as an informal, unscientific, web-based poll.

# WLA 12

WLA LANDSCAPE ARCHITECTURE MAGAZINE

EDITOR | DAMIAN HOLMES  
damian@worldlandscapearchitect.com

PROJECT SUBMISSIONS  
submit@worldlandscapearchitect.com

DISTRIBUTION |  
DIGITAL | gumroad.com

ADVERTISING |  
advertise@worldlandscapearchitect.com

WORLD LANDSCAPE ARCHITECTURE  
ADDRESS |  
ROOM 801 BUILDING 13 2518 LONGHUA ROAD  
SHANGHAI P.R.C. 200232

PUBLISHED FEBRUARY 2014  
©2014 WORLD LANDSCAPE ARCHITECTURE

PARTNERS

**ASPECT Studios™**

SUPPORTERS

SINATRA MURPHY

MATHEWS NIELSEN

DWG. | URBAN LANDSCAPE ARCHITECTURE

network edition